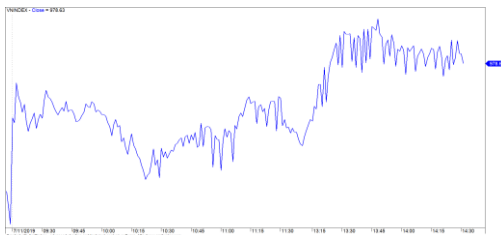


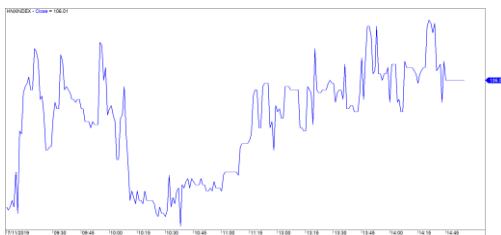
| 市場走勢 2019/7/11 | | | |
|-----------------|--------|--------|--------|
| 市場指數 | VNI | HNI | UPCOM |
| 收盤 | 978.63 | 106.01 | 56.78 |
| %日 | 0.51% | 0.83% | 0.85% |
| %週 | 0.57% | 1.60% | 2.20% |
| %月 | 1.72% | 1.98% | 2.99% |
| %年 | 9.57% | 7.60% | 16.16% |
| 成交值(十億盾) | | | |
| 當日 | 3,298 | 396 | 305 |
| 日均量/週 | 3,517 | 353 | 273 |
| 日均量/月 | 3,720 | 342 | 280 |
| 外資進出 | | | |
| 買進 | 502.90 | 31.12 | 43.39 |
| 賣出 | 387.79 | 8.10 | 42.57 |
| 買賣超 | 115.11 | 23.02 | 0.82 |
| 市場漲跌家數 | | | |
| 上漲 | 166 | 66 | 223 |
| 下跌 | 123 | 72 | 98 |
| 持平 | 98 | 231 | 572 |
| 市場指標 | | | |
| P/E | 16.82 | 9.52 | 18.30 |
| 總市值 (兆盾) | 3,296 | 192 | 985 |
| 股息殖利率 | 1.70% | 3.22% | 6.94% |

資料源: Bloomberg – YSVN

VNINDEX



HNXINDEX



市場走勢

越南股市擴大各大股指的漲幅。VN-Index 收漲 0.51% 至 978.63 點，而 HNX 指數有趨於強勁上漲 0.83%，收於 106.01 點，Upcom 指數上漲 0.85%，收至 56.78 點。三大證交流動資金逾達 3.3 兆越盾。

銀行股強勁反彈，顯著是 CTG (2.6%)，TCB (1.4%)，VCB (2.1%)，BID (3.2%)，ACB (2%)，MBB (1.4%) 領先市場漲勢。由於低接買盤現金流動性大幅增長逾達 700 萬股，FLC 上漲 4.3% 受到關注。中、小型股並沒有太大的漲幅，但有多支股票顯著大漲，如：HSX 上的 HNG (2.7%)，AMD (2.3%)，DAH (6.8%)，FIT (3.1%)，HNX 上的 DBC (3.5%)，DTD (9.3%)，Upcom 上的 NTC (3.8%)。相反，MSN 是唯一一個股以 2% 的跌幅強勁調整，對 VN-Index 最有負面影響。外資也是對這股大量拋售。

外資在三大證交上連續第 6 盤買超共 1,100 億越盾。其中，買超前三名是 VCB (310 億越盾)，CTD (280 億越盾)，PVS (260 億越盾)。相反，賣超的前三名是 MSN (300 億越盾)，VIC (170 億越盾)，HBC (150 億越盾)。

短線市場觀點

我們認為當指數面對 VN-Index 987 點和 VN-Index 882 點，短期賣壓可能增加。同時，價格走勢圖仍趨於強勢波動期，短期現金流繼續增加，我們評估短期上漲趨勢將繼續維持，當油氣及銀行股輪流引領市場。此外，股票比重繼續小幅上升，表明短期支付繼續增加，短期風險仍偏低。

我們的趨勢指標仍維持兩大股指短期趨勢上漲，支撐區位於 VN-Index 956.09 點，和 HNX-Index 103.46 點。因此，我們建議短線投資者可利用調整期間增加庫存比例。

建議短線投資比重：56% 股票 / 44% 現金

(股票趨勢追蹤圖在下一頁內更新)

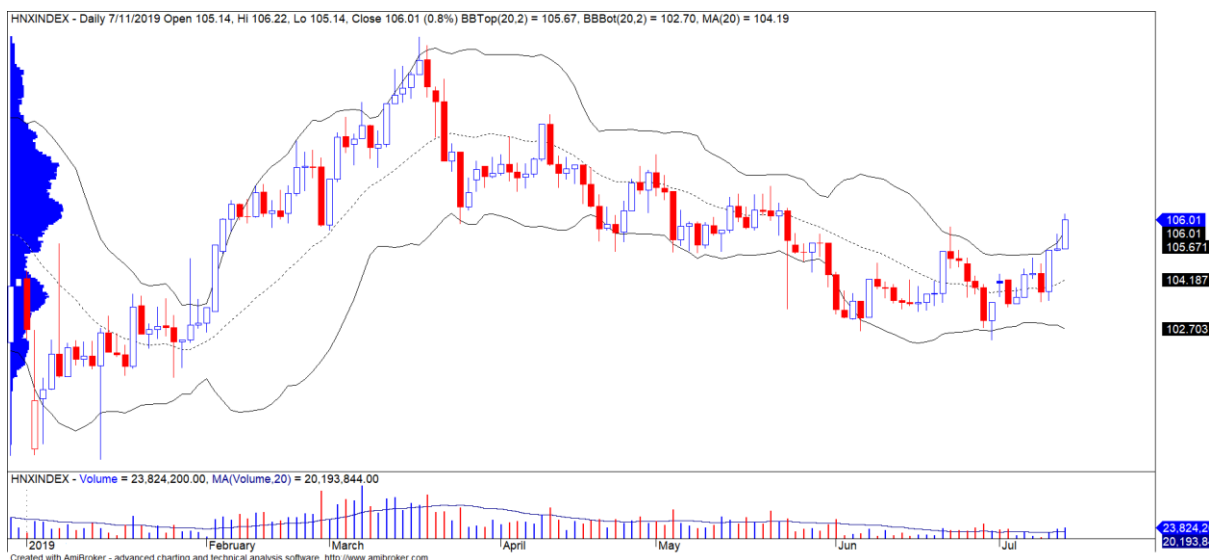


We Create Fortune

技術分析圖



指數技術分析圖 VN-Index



指數技術分析圖 HNX-Index

| 指數 | 短期趨勢 | 中期趨勢 | 阻力區 1 | 阻力區 2 | 支撐區 1 | 支撐區 2 |
|-------------|------|------|-------|-------|-------|-------|
| VN-Index | 上漲 | 上漲 | 1,000 | 1,025 | 965 | 953 |
| HNX-Index | 上漲 | 下跌 | 108 | 110 | 105 | 101 |
| VN30 | 上漲 | 上漲 | 895 | 935 | 877 | 863 |
| VNMidcaps | 上漲 | 上漲 | 992 | 1,030 | 969 | 963 |
| VNSmallcaps | 上漲 | 上漲 | 835 | 845 | 822 | 804 |

We Create Fortune

股票趨勢追蹤表

| 股票 | 價格 | 短期趨勢 | 中期趨勢 | 短期買進價格 | 短期止損 | 暫計短期利潤% | 短期訊號 | 中期買進價格 | 中期止損 | 暫計中期獲利% | 中期訊號 |
|-----|--------|------|------|--------|--------|---------|------|--------|--------|---------|------|
| AAA | 18.70 | TĂNG | TĂNG | 18.60 | 18.46 | 0.54% | | 16.85 | 16.36 | 10.98% | |
| ACB | 30.20 | TĂNG | GIẢM | 29.80 | 28.91 | 1.34% | | | 31.45 | | |
| ACV | 82.50 | GIẢM | TĂNG | | 86.90 | | | 90.00 | 81.77 | -8.33% | |
| ANV | 26.50 | GIẢM | GIẢM | | 27.71 | | | | 30.56 | | |
| ASM | 7.07 | GIẢM | GIẢM | | 7.18 | | | | 7.88 | | |
| BFC | 18.25 | GIẢM | GIẢM | | 18.82 | | | | 21.85 | | |
| BID | 33.45 | TĂNG | TĂNG | 32.65 | 31.69 | 2.45% | | 33.40 | 31.23 | 0.15% | |
| BMP | 46.30 | TĂNG | GIẢM | 44.50 | 44.38 | 4.04% | | | 47.72 | | |
| BSR | 12.30 | GIẢM | GIẢM | | 12.72 | | | | 14.49 | | |
| BVH | 84.90 | TĂNG | GIẢM | 79.00 | 81.76 | 7.47% | | | 85.11 | | |
| BWE | 28.25 | TĂNG | TĂNG | 25.85 | 26.96 | 9.28% | | 20.00 | 24.07 | 41.25% | |
| CEO | 10.40 | GIẢM | GIẢM | | 10.51 | | | | 11.33 | | |
| CII | 22.40 | GIẢM | GIẢM | | 22.74 | | | | 24.28 | | |
| CMG | 37.40 | TĂNG | TĂNG | 37.80 | 36.31 | -1.06% | | 23.20 | 32.95 | 61.21% | |
| CMX | 22.20 | GIẢM | TĂNG | | 23.95 | | | 5.91 | 21.62 | 275.63% | |
| CSM | 14.50 | GIẢM | TĂNG | | 15.22 | | | 14.39 | 14.22 | 0.76% | |
| CTD | 108.50 | TĂNG | GIẢM | 102.00 | 102.45 | 6.37% | | | 112.01 | | |
| CTG | 21.55 | TĂNG | GIẢM | 21.05 | 20.24 | 2.38% | | | 22.80 | | |
| CTI | 23.50 | TĂNG | GIẢM | 23.80 | 22.66 | -1.26% | | | 25.09 | | |
| CTR | 32.60 | TĂNG | N/A | 28.80 | 29.84 | 13.19% | | - | 3.89 | | |
| CVT | 20.35 | TĂNG | TĂNG | 19.25 | 19.30 | 5.71% | | | 20.33 | | |
| DCM | 8.02 | TĂNG | GIẢM | 8.50 | 7.97 | -5.65% | | | 8.83 | | |
| DGC | 31.30 | TĂNG | GIẢM | 28.50 | 29.61 | 9.82% | | | 31.31 | | |
| DGW | 22.90 | TĂNG | GIẢM | 21.85 | 21.98 | 4.81% | | | 23.12 | | |
| DHA | 36.50 | TĂNG | TĂNG | 32.25 | 34.28 | 13.18% | | 29.10 | 32.44 | 25.43% | |
| DHC | 44.10 | TĂNG | TĂNG | 40.90 | 42.96 | 7.82% | | 35.20 | 38.25 | 25.28% | |
| DHG | 105.20 | TĂNG | GIẢM | 108.00 | 101.56 | -2.59% | | | 114.77 | | |
| DIG | 13.20 | GIẢM | GIẢM | | 13.65 | | | | 14.82 | | |
| DPG | 36.85 | GIẢM | TĂNG | | 38.07 | | | 40.02 | 34.78 | -7.92% | |
| DPM | 15.50 | GIẢM | GIẢM | | 15.88 | | | | 17.57 | | |
| DPR | 44.05 | GIẢM | TĂNG | | 45.53 | | | 42.50 | 40.21 | 3.65% | |
| DQC | 18.10 | TĂNG | GIẢM | 18.60 | 17.61 | -2.69% | | | 20.68 | | |
| DRC | 19.40 | TĂNG | GIẢM | 19.40 | 19.19 | 0.00% | MUA | | 20.88 | | |
| DXG | 18.50 | TĂNG | GIẢM | 19.10 | 18.15 | -3.14% | | | 20.75 | | |
| EIB | 18.55 | TĂNG | TĂNG | 17.80 | 17.77 | 4.21% | | 14.70 | 16.75 | 26.19% | |

We Create Fortune

| | | | | | | | | | | | |
|-----|--------|------|------|-------|--------|--------|-----|-------|--------|---------|-----|
| FCN | 14.60 | TĂNG | TĂNG | 15.50 | 14.15 | -5.81% | | 16.05 | 13.65 | -9.03% | |
| FMC | 29.20 | TĂNG | GIẢM | 28.95 | 28.58 | 0.86% | | | 30.62 | | |
| FPT | 47.00 | TĂNG | TĂNG | 45.20 | 45.63 | 3.98% | | 46.00 | 42.44 | 2.17% | |
| GAS | 106.20 | GIẢM | GIẢM | | 106.70 | | | | 113.06 | | |
| GEX | 21.55 | GIẢM | GIẢM | | 22.07 | | | | 23.75 | | |
| GIL | 26.20 | TĂNG | GIẢM | 27.30 | 25.94 | -4.03% | | | 29.67 | | |
| GMD | 27.00 | TĂNG | GIẢM | 27.10 | 26.47 | -0.37% | | | 27.99 | | |
| GTN | 18.60 | GIẢM | TĂNG | | 19.26 | | | 15.00 | 16.37 | 24.00% | |
| GVR | 13.70 | TĂNG | GIẢM | 13.50 | 12.58 | 1.48% | | | N/A | | |
| HAG | 5.70 | TĂNG | TĂNG | 5.15 | 5.34 | 10.68% | | | 5.62 | | |
| HAX | 18.80 | TĂNG | TĂNG | 14.25 | 15.99 | 31.93% | | 15.75 | 15.34 | 19.37% | MUA |
| HBC | 15.00 | GIẢM | GIẢM | | 15.58 | | | | 17.63 | | |
| HCM | 23.85 | TĂNG | GIẢM | 24.00 | 23.69 | -0.62% | | | 26.60 | | |
| HDB | 26.10 | TĂNG | GIẢM | 27.60 | 25.94 | -5.43% | | | 28.77 | | |
| HDC | 15.15 | TĂNG | TĂNG | 15.25 | 14.73 | -0.66% | | 15.25 | 13.30 | -0.66% | |
| HDG | 34.25 | TĂNG | GIẢM | 32.70 | 33.48 | 4.74% | | | 34.59 | | |
| HNG | 19.00 | TĂNG | TĂNG | 15.75 | 17.62 | 20.63% | | 17.10 | 14.71 | 11.11% | |
| HPG | 21.55 | GIẢM | GIẢM | | 22.59 | | | | 25.71 | | |
| HSG | 7.22 | GIẢM | TĂNG | | 7.72 | | | 9.30 | 7.01 | -22.37% | |
| HT1 | 15.85 | GIẢM | TĂNG | | 16.42 | | | 14.80 | 15.47 | 7.09% | |
| HUT | 2.40 | GIẢM | GIẢM | | 2.67 | | | | 3.25 | | |
| HVN | 43.70 | TĂNG | TĂNG | 43.70 | 43.28 | 0.00% | MUA | 39.00 | 38.27 | 12.05% | |
| KBC | 15.25 | TĂNG | TĂNG | 14.30 | 14.84 | 6.64% | | 15.35 | 15.01 | -0.65% | MUA |
| KDH | 22.80 | GIẢM | GIẢM | | 23.76 | | | | 24.76 | | |
| KSB | 21.70 | GIẢM | GIẢM | | 23.24 | | | | 25.36 | | |
| LCG | 10.55 | TĂNG | GIẢM | 10.45 | 9.96 | 0.96% | | | 11.44 | | |
| LDG | 8.25 | TĂNG | GIẢM | 8.63 | 8.15 | -4.40% | | | 9.75 | | |
| LHG | 19.60 | TĂNG | TĂNG | 19.70 | 18.64 | -0.51% | | 19.30 | 17.02 | 1.55% | |
| LPB | 8.00 | TĂNG | GIẢM | 8.10 | 7.73 | -1.23% | | | 8.51 | | |
| LSS | 5.30 | GIẢM | GIẢM | | 5.63 | | | | 5.91 | | |
| MBB | 21.40 | TĂNG | TĂNG | 21.30 | 20.69 | 0.47% | | 21.85 | 20.11 | -2.06% | |
| MPC | 33.00 | GIẢM | GIẢM | | 35.56 | | | | 40.54 | | |
| MSN | 82.50 | GIẢM | TĂNG | | 85.98 | | | 89.00 | 80.74 | -7.30% | |
| MSR | 18.70 | GIẢM | GIẢM | | 19.49 | | | | 20.71 | | |
| MWG | 98.00 | TĂNG | TĂNG | 88.30 | 95.04 | 10.99% | | 88.70 | 85.27 | 10.48% | |
| NDN | 16.50 | TĂNG | TĂNG | 14.10 | 15.74 | 17.02% | | 13.70 | 14.40 | 20.44% | |
| NKG | 6.30 | GIẢM | GIẢM | | 6.49 | | | | 7.27 | | |
| NLG | 29.80 | GIẢM | TĂNG | | 29.84 | | | 28.70 | 27.83 | 3.83% | |
| NT2 | 26.80 | GIẢM | GIẢM | | 27.59 | | | | 29.14 | | |



We Create Fortune

| | | | | | | | | | | | |
|-----|--------|------|------|--------|--------|--------|-----|--------|-----------|---------|-----|
| NTL | 25.40 | TĂNG | TĂNG | 22.95 | 24.42 | 10.68% | | 10.45 | 21.18 | 143.06% | |
| NVL | 61.50 | TĂNG | GIẢM | 59.90 | 58.04 | 2.67% | | | 62.33 | | |
| OIL | 11.40 | GIẢM | GIẢM | | 11.71 | | | | 13.24 | | |
| PAC | 35.10 | GIẢM | GIẢM | | 36.87 | | | | 38.86 | | |
| PC1 | 18.50 | GIẢM | GIẢM | | 19.39 | | | | 20.91 | | |
| PDR | 26.80 | TĂNG | TĂNG | 24.10 | 25.74 | 11.20% | | 29.00 | 23.81 | -7.59% | |
| PHR | 59.80 | TĂNG | TĂNG | 61.20 | 57.70 | -2.29% | | 24.00 | 50.97 | 149.17% | |
| PLX | 64.60 | TĂNG | TĂNG | 64.20 | 62.01 | 0.62% | | 62.40 | 58.43 | 3.53% | |
| PNJ | 73.00 | GIẢM | TĂNG | | 75.30 | | | 104.00 | 72.83 | -29.81% | |
| POW | 14.80 | GIẢM | TĂNG | | 15.26 | | | 15.70 | 13.92 | -5.73% | |
| PVT | 17.10 | TĂNG | GIẢM | 16.80 | 16.60 | 1.79% | | | 17.62 | | |
| PPC | 31.10 | TĂNG | TĂNG | 28.75 | 30.05 | 8.17% | | 19.70 | 25.74 | 57.87% | |
| PTB | 69.90 | TĂNG | TĂNG | 66.60 | 68.68 | 4.95% | | 64.00 | 62.33 | 9.22% | |
| PVB | 19.20 | GIẢM | TĂNG | | 19.45 | | | 20.10 | 16.79 | -4.48% | |
| PVD | 19.00 | TĂNG | TĂNG | 19.20 | 18.08 | -1.04% | | 18.50 | 17.78 | 2.70% | |
| PVI | 36.60 | TĂNG | GIẢM | 37.40 | 35.95 | -2.14% | | | 39.70 | | |
| PVS | 24.10 | TĂNG | TĂNG | 23.00 | 22.79 | 4.78% | | 21.10 | 21.47 | 14.22% | |
| PXS | 5.05 | TĂNG | TĂNG | 5.09 | 4.81 | -0.79% | | 4.85 | 4.26 | 4.12% | |
| QNS | 31.40 | TĂNG | TĂNG | 33.80 | 29.58 | -7.10% | | 33.80 | 27.66 | -7.10% | |
| REE | 33.80 | TĂNG | TĂNG | 33.05 | 32.76 | 2.27% | | 33.33 | 31.11 | 1.42% | |
| SAB | 286.00 | TĂNG | TĂNG | 253.00 | 271.75 | 13.04% | | 245.00 | 251.42 | 16.73% | |
| SAM | 8.25 | TĂNG | TĂNG | 8.25 | 8.07 | 0.00% | | 7.40 | 7.69 | 11.49% | |
| SCR | 7.16 | GIẢM | GIẢM | | 7.34 | | | | 7.61 | | |
| SHI | 8.25 | GIẢM | TĂNG | | 8.30 | | | 6.99 | 7.45 | 18.03% | |
| SJS | 18.80 | GIẢM | GIẢM | 18.30 | 18.99 | 3.77% | BÁN | - | 19.93 | | |
| SKG | 11.85 | GIẢM | GIẢM | | 12.54 | | | | 12.61 | | |
| SSI | 25.10 | TĂNG | GIẢM | 25.35 | 24.68 | -0.99% | | | 26.98 | | |
| STB | 11.50 | GIẢM | GIẢM | | 11.71 | | | | 12.42 | | |
| TCB | 21.00 | TĂNG | GIẢM | 21.40 | 20.43 | -1.87% | | | N/A | | |
| TCM | 26.80 | GIẢM | GIẢM | 27.85 | 27.11 | -2.64% | BÁN | | 30.59 | | |
| TDH | 9.67 | GIẢM | TĂNG | | 9.95 | | | 11.65 | 9.17 | -17.00% | |
| TLH | 5.00 | GIẢM | TĂNG | | 5.09 | | | 5.39 | 4.80 | -7.24% | |
| TNG | 21.30 | TĂNG | TĂNG | 19.70 | 20.48 | 8.12% | | 12.00 | 17.02 | 77.50% | |
| VCB | 74.00 | TĂNG | TĂNG | 69.20 | 69.37 | 6.94% | | 62.00 | 64.85 | 19.35% | |
| VCG | 26.20 | GIẢM | TĂNG | | 27.05 | | | 19.20 | 24.08 | 36.46% | |
| VCS | 69.00 | TĂNG | TĂNG | 61.20 | 64.99 | 12.75% | | 68.00 | 66.68 | 1.47% | MUA |
| VGC | 21.45 | TĂNG | GIẢM | 21.50 | 20.72 | -0.23% | | | 21.65 | | |
| VGT | 10.40 | GIẢM | GIẢM | | 11.09 | | | | 13,090.90 | | |
| VHC | 88.00 | GIẢM | GIẢM | | 89.08 | | | | 95.80 | | |

We Create Fortune

| | | | | | | | | | | |
|-----|--------|------|------|--------|--------|--------|-----|--------|-----------|-------|
| VHM | 83.10 | TĂNG | GIẢM | 81.00 | 81.13 | 2.59% | | | 87.75 | |
| VIB | 17.00 | TĂNG | GIẢM | 17.00 | 16.41 | 0.00% | | | 17.44 | |
| VIC | 116.50 | GIẢM | TĂNG | | 117.69 | | | 112.00 | 108.25 | 4.02% |
| VIP | 5.77 | TĂNG | GIẢM | 5.77 | 5.70 | 0.00% | MUA | | 6.05 | |
| VJC | 131.30 | TĂNG | TĂNG | 123.30 | 127.03 | 6.49% | | 124.50 | 116.01 | 5.46% |
| VND | 15.15 | GIẢM | GIẢM | | 15.64 | | | | 17.09 | |
| VNG | 22.05 | TĂNG | TĂNG | 20.60 | 21.69 | 7.04% | | 21.50 | 19.96 | 2.56% |
| VNM | 125.20 | TĂNG | GIẢM | 126.00 | 123.38 | -0.63% | | | 133.60 | |
| VPB | 19.65 | TĂNG | GIẢM | 18.60 | 18.79 | 5.65% | | | 19.82 | |
| VPI | 41.75 | TĂNG | GIẢM | 41.75 | 41.37 | 0.00% | | | 43,124.20 | |
| VRC | 15.75 | GIẢM | GIẢM | | 16.15 | | | | 17.69 | |
| VRE | 36.45 | TĂNG | TĂNG | 35.75 | 35.01 | 1.96% | | 35.00 | 31.18 | 4.14% |
| VSC | 31.60 | TĂNG | GIẢM | 31.90 | 30.81 | -0.94% | | | 34.25 | |

LARGECAPS 大型股票趨勢追蹤表

| 股票 | 價格 | 短期趨勢 | 中期趨勢 | 短期買進價格 | 短期止損 | 暫計短期利潤% | 短期訊號 | 中期買進價格 | 中期止損 | 暫計中期獲利% | 中期訊號 |
|-----|--------|------|------|--------|--------|---------|------|--------|--------|---------|------|
| ACB | 30.20 | TĂNG | GIẢM | 29.80 | 28.91 | 1.34% | | | 31.45 | | |
| BID | 33.45 | TĂNG | TĂNG | 32.65 | 31.69 | 2.45% | | 33.40 | 31.23 | 0.15% | |
| BSR | 12.30 | GIẢM | GIẢM | | 12.72 | | | | 14.49 | | |
| BVH | 84.90 | TĂNG | GIẢM | 79.00 | 81.76 | 7.47% | | | 85.11 | | |
| CTG | 21.55 | TĂNG | GIẢM | 21.05 | 20.24 | 2.38% | | | 22.80 | | |
| EIB | 18.55 | TĂNG | TĂNG | 17.80 | 17.77 | 4.21% | | 14.70 | 16.75 | 26.19% | |
| FPT | 47.00 | TĂNG | TĂNG | 45.20 | 45.63 | 3.98% | | 41.00 | 42.44 | 14.64% | |
| GAS | 106.20 | GIẢM | GIẢM | | 106.70 | | | | 113.06 | | |
| HDB | 26.10 | TĂNG | GIẢM | 27.60 | 25.94 | -5.43% | | | 28.77 | | |
| HNG | 19.00 | TĂNG | TĂNG | 15.75 | 17.62 | 20.63% | | 17.10 | 14.71 | 11.11% | |
| HPG | 21.55 | GIẢM | GIẢM | | 22.59 | | | | 25.71 | | |
| HVN | 43.70 | TĂNG | TĂNG | 43.70 | 43.28 | 0.00% | MUA | 39.00 | 38.27 | 12.05% | |
| KDH | 22.80 | GIẢM | GIẢM | | 23.76 | | | | 24.76 | | |
| MBB | 21.40 | TĂNG | TĂNG | 21.30 | 20.69 | 0.47% | | 21.27 | 20.11 | 0.61% | |
| MSN | 82.50 | GIẢM | TĂNG | | 85.98 | | | 89.00 | 80.74 | -7.30% | |
| MWG | 98.00 | TĂNG | TĂNG | 88.30 | 95.04 | 10.99% | | 88.70 | 85.27 | 10.48% | |
| NVL | 61.50 | TĂNG | GIẢM | 59.90 | 58.04 | 2.67% | | | 62.33 | | |
| OIL | 11.40 | GIẢM | GIẢM | | 11.71 | | | | 13.24 | | |
| PLX | 64.60 | TĂNG | N/A | 64.20 | 62.01 | 0.62% | | 62.40 | 58.43 | 3.53% | |
| PNJ | 73.00 | GIẢM | TĂNG | | 75.30 | | | 77.88 | 72.83 | -6.27% | |
| POW | 14.80 | GIẢM | TĂNG | | 15.26 | | | 15.70 | 13.92 | -5.73% | |

We Create Fortune

| | | | | | | | | | | | |
|-----|--------|------|------|--------|--------|--------|--|--------|--------|---------|--|
| PVS | 24.10 | TĂNG | TĂNG | 23.00 | 22.79 | 4.78% | | 21.10 | 21.47 | 14.22% | |
| QNS | 31.40 | TĂNG | TĂNG | 33.80 | 29.58 | -7.10% | | 33.80 | 27.66 | -7.10% | |
| REE | 33.80 | TĂNG | TĂNG | 33.05 | 32.76 | 2.27% | | 33.33 | 31.11 | 1.42% | |
| ROS | 29.20 | GIẢM | TĂNG | | 30.19 | | | 34.80 | 27.33 | -16.09% | |
| SSI | 25.10 | TĂNG | GIẢM | 25.35 | 24.68 | -0.99% | | | 26.98 | | |
| STB | 11.50 | GIẢM | GIẢM | | 11.71 | | | | 12.42 | | |
| TCB | 21.00 | TĂNG | GIẢM | 21.40 | 20.43 | -1.87% | | | 22.88 | | |
| TPB | 22.95 | GIẢM | GIẢM | | 23.83 | | | | N/A | | |
| VCB | 74.00 | TĂNG | TĂNG | 69.20 | 69.37 | 6.94% | | 62.00 | 64.85 | 19.35% | |
| VCG | 26.20 | GIẢM | TĂNG | | 27.05 | | | 18.44 | 24.08 | 42.07% | |
| VEA | 59.70 | GIẢM | GIẢM | | 60.38 | | | | N/A | | |
| VGI | 27.80 | GIẢM | GIẢM | | 28.73 | | | | N/A | | |
| VHM | 83.10 | TĂNG | GIẢM | 81.00 | 81.13 | 2.59% | | | 87.75 | | |
| VIB | 17.00 | TĂNG | GIẢM | 17.00 | 16.41 | 0.00% | | | 17.44 | | |
| VIC | 116.50 | GIẢM | TĂNG | | 117.69 | | | 112.00 | 108.25 | 4.02% | |
| VJC | 131.30 | TĂNG | TĂNG | 123.30 | 127.03 | 6.49% | | 124.50 | 116.01 | 5.46% | |
| VNM | 125.20 | TĂNG | GIẢM | 126.00 | 123.38 | -0.63% | | | 133.60 | | |
| VPB | 19.65 | TĂNG | GIẢM | 18.60 | 18.79 | 5.65% | | | 19.82 | | |
| VRE | 36.45 | TĂNG | TĂNG | 35.75 | 35.01 | 1.96% | | 34.00 | 31.18 | 7.22% | |

MIDCAPS 中型股票趨勢追蹤表

| 股票 | 價格 | 短期趨勢 | 中期趨勢 | 短期買進價格 | 短期止損 | 暫計短期利潤% | 短期訊號 | 中期買進價格 | 中期止損 | 暫計中期獲利% | 中期訊號 |
|-----|-------|------|------|--------|-------|---------|------|--------|-------|---------|------|
| AAA | 18.70 | TĂNG | TĂNG | 18.60 | 18.46 | 0.54% | | 16.85 | 16.36 | 10.98% | |
| ANV | 26.50 | GIẢM | GIẢM | | 27.71 | | | | 30.56 | | |
| ASM | 7.07 | GIẢM | GIẢM | | 7.18 | | | | 7.88 | | |
| BMP | 46.30 | TĂNG | GIẢM | 44.50 | 44.38 | 4.04% | | | 47.72 | | |
| BWE | 28.25 | TĂNG | TĂNG | 25.85 | 26.96 | 9.28% | | 19.44 | 24.07 | 45.32% | |
| C4G | 8.70 | GIẢM | #N/A | | 9.01 | | | - | #N/A | | |
| CEO | 10.40 | GIẢM | GIẢM | | 10.51 | | | | 11.33 | | |
| CII | 22.40 | GIẢM | GIẢM | | 22.74 | | | | 24.28 | | |
| CRE | 24.95 | TĂNG | #N/A | 25.90 | 24.58 | -3.67% | | - | #N/A | | |
| CTI | 23.50 | TĂNG | GIẢM | 23.80 | 22.66 | -1.26% | | | 25.09 | | |
| CTR | 32.60 | TĂNG | #N/A | 28.80 | 29.84 | 13.19% | | - | #N/A | | |
| DCM | 8.02 | TĂNG | GIẢM | 8.50 | 7.97 | -5.65% | | | 8.83 | | |
| DHC | 44.10 | TĂNG | TĂNG | 40.90 | 42.96 | 7.82% | | 35.20 | 38.25 | 25.28% | |
| DIG | 13.20 | GIẢM | GIẢM | | 13.65 | | | | 14.82 | | |
| DPM | 15.50 | GIẢM | GIẢM | | 15.88 | | | | 17.57 | | |

We Create Fortune

| | | | | | | | | | | | |
|---------|--------|------|------|--------|--------|--------|-----|--------|-------|---------|-----|
| DRC | 19.40 | TĂNG | GIẢM | 19.40 | 19.19 | 0.00% | MUA | | 20.88 | | |
| DXG | 18.50 | TĂNG | GIẢM | 19.10 | 18.15 | -3.14% | | | 20.75 | | |
| E1VFN30 | 14.60 | TĂNG | GIẢM | 14.59 | 14.16 | 0.07% | | | 15.16 | | |
| FCN | 14.60 | TĂNG | TĂNG | 15.50 | 14.15 | -5.81% | | 16.05 | 13.65 | -9.03% | |
| FLC | 4.40 | TĂNG | GIẢM | 4.40 | 4.33 | 0.00% | MUA | | 4.70 | | |
| FTM | 24.50 | TĂNG | TĂNG | 24.50 | 24.21 | 0.00% | | 16.25 | 21.48 | 50.77% | |
| GEG | 22.80 | TĂNG | TĂNG | 22.80 | 21.32 | 0.00% | | 12.90 | 20.50 | 76.74% | |
| GEX | 21.55 | GIẢM | GIẢM | | 22.07 | | | | 23.75 | | |
| GMD | 27.00 | TĂNG | GIẢM | 27.10 | 26.47 | -0.37% | | | 27.99 | | |
| GTN | 18.60 | GIẢM | TĂNG | | 19.26 | | | 15.00 | 16.37 | 24.00% | |
| GVR | 13.70 | TĂNG | #N/A | 13.50 | 12.58 | 1.48% | | - | #N/A | | |
| HAG | 5.70 | TĂNG | TĂNG | 5.15 | 5.34 | 10.68% | | | 5.62 | | |
| HBC | 15.00 | GIẢM | GIẢM | | 15.58 | | | | 17.63 | | |
| HCM | 23.85 | TĂNG | GIẢM | 24.00 | 23.69 | -0.62% | | | 26.60 | | |
| HDG | 34.25 | TĂNG | GIẢM | 32.70 | 33.48 | 4.74% | | | 34.59 | | |
| HPX | 26.60 | TĂNG | #N/A | 26.60 | 26.60 | 0.00% | MUA | - | #N/A | | |
| HSG | 7.22 | GIẢM | TĂNG | | 7.72 | | | 8.45 | 7.01 | -14.58% | |
| HT1 | 15.85 | GIẢM | TĂNG | | 16.42 | | | 14.80 | 15.47 | 7.09% | |
| IBC | 21.70 | TĂNG | TĂNG | 20.90 | 21.18 | 3.83% | | 24.90 | 20.05 | -12.85% | |
| IDI | 7.27 | TĂNG | GIẢM | 7.48 | 7.24 | -2.81% | | | 8.42 | | |
| IJC | 11.10 | GIẢM | GIẢM | | 11.13 | | | | 11.50 | | |
| ITA | 3.11 | GIẢM | TĂNG | | 3.19 | | | 3.20 | 2.75 | -2.81% | |
| KBC | 15.25 | TĂNG | TĂNG | 14.30 | 14.84 | 6.64% | | 15.35 | 15.01 | -0.65% | MUA |
| KSB | 21.70 | GIẢM | GIẢM | | 23.24 | | | | 25.36 | | |
| LDG | 8.25 | TĂNG | GIẢM | 8.63 | 8.15 | -4.40% | | | 9.75 | | |
| LPB | 8.00 | TĂNG | GIẢM | 8.10 | 7.73 | -1.23% | | | 8.51 | | |
| MBS | 14.30 | GIẢM | #N/A | | 15.03 | | | 16.00 | #N/A | #N/A | |
| MPC | 33.00 | GIẢM | GIẢM | | 35.56 | | | | 40.54 | | |
| NBB | 21.70 | TĂNG | TĂNG | 22.00 | 20.48 | -1.36% | | 21.50 | 18.83 | 0.93% | |
| NKG | 6.30 | GIẢM | GIẢM | | 6.49 | | | | 7.27 | | |
| NLG | 29.80 | GIẢM | TĂNG | | 29.84 | | | 28.70 | 27.83 | 3.83% | |
| NT2 | 26.80 | GIẢM | GIẢM | | 27.59 | | | | 29.14 | | |
| NTC | 169.50 | TĂNG | #N/A | 144.00 | 150.01 | 17.71% | | 120.00 | #N/A | #N/A | |
| NTL | 25.40 | TĂNG | TĂNG | 22.95 | 24.42 | 10.68% | | 9.33 | 21.18 | 172.20% | |
| NVB | 8.10 | GIẢM | GIẢM | | 8.44 | | | | 9.22 | | |
| OGC | 3.99 | GIẢM | GIẢM | | 4.15 | | | | 4.79 | | |
| PC1 | 18.50 | GIẢM | GIẢM | | 19.39 | | | | 20.91 | | |
| PDR | 26.80 | TĂNG | TĂNG | 24.10 | 25.74 | 11.20% | | 23.60 | 23.81 | 13.58% | |

We Create Fortune

| | | | | | | | | | | | |
|-----|-------|------|------|-------|-------|--------|-----|-------|-------|---------|--|
| PHR | 59.80 | TĂNG | TĂNG | 61.20 | 57.70 | -2.29% | | 22.86 | 50.97 | 161.54% | |
| PPC | 31.10 | TĂNG | TĂNG | 28.75 | 30.05 | 8.17% | | 17.42 | 25.74 | 78.51% | |
| PTB | 69.90 | TĂNG | TĂNG | 66.60 | 68.68 | 4.95% | | 60.78 | 62.33 | 15.01% | |
| PVD | 19.00 | TĂNG | TĂNG | 19.20 | 18.08 | -1.04% | | 18.50 | 17.78 | 2.70% | |
| PVI | 36.60 | TĂNG | GIẢM | 37.40 | 35.95 | -2.14% | | | 39.70 | | |
| PVT | 17.10 | TĂNG | GIẢM | 16.80 | 16.60 | 1.79% | | | 17.62 | | |
| QCG | 4.40 | GIẢM | GIẢM | | 4.67 | | | | 5.71 | | |
| SAM | 8.25 | TĂNG | TĂNG | 8.25 | 8.07 | 0.00% | | 7.40 | 7.69 | 11.49% | |
| SBT | 17.05 | GIẢM | GIẢM | | 17.18 | | | | 18.51 | | |
| SCR | 7.16 | GIẢM | GIẢM | | 7.34 | | | | 7.61 | | |
| SHB | 6.80 | GIẢM | GIẢM | | 7.07 | | | | 7.60 | | |
| SHS | 9.70 | GIẢM | TĂNG | | 10.12 | | | 12.10 | 9.22 | -19.83% | |
| SJS | 18.80 | GIẢM | GIẢM | 18.30 | 18.99 | 3.77% | BÁN | - | 19.93 | | |
| STK | 24.60 | TĂNG | TĂNG | 24.20 | 23.65 | 1.65% | | 17.00 | 20.15 | 44.71% | |
| SZC | 22.50 | TĂNG | #N/A | 20.45 | 20.39 | 10.02% | | - | #N/A | | |
| TCH | 21.80 | TĂNG | GIẢM | 21.15 | 20.63 | 3.07% | | | 22.45 | | |
| TCM | 26.80 | GIẢM | GIẢM | 27.85 | 27.11 | -2.64% | BÁN | | 30.59 | | |
| TNG | 21.30 | TĂNG | TĂNG | 19.70 | 20.48 | 8.12% | | 12.00 | 17.02 | 77.50% | |
| TTB | 22.95 | TĂNG | GIẢM | 22.60 | 22.20 | 1.55% | | | 24.54 | | |
| VCI | 32.30 | TĂNG | GIẢM | 32.30 | 30.44 | 0.00% | | | 35.72 | | |
| VGT | 10.40 | GIẢM | #N/A | | 11.09 | | | - | #N/A | | |
| VHC | 88.00 | GIẢM | GIẢM | | 89.08 | | | | 95.80 | | |
| VND | 15.15 | GIẢM | GIẢM | | 15.64 | | | | 17.09 | | |
| VNG | 22.05 | TĂNG | TĂNG | 20.60 | 21.69 | 7.04% | | 21.50 | 19.96 | 2.56% | |
| VPI | 41.75 | TĂNG | GIẢM | 41.75 | 41.37 | 0.00% | | | 42.86 | | |

MALLCAPS 小型股票趨勢追蹤表

| 股票 | 價格 | 短期趨勢 | 中期趨勢 | 短期買進價格 | 短期止損 | 暫計短期利潤% | 短期訊號 | 中期買進價格 | 中期止損 | 暫計中期獲利% | 中期訊號 |
|-----|-------|------|------|--------|-------|---------|------|--------|-------|---------|------|
| AAV | 9.20 | GIẢM | #N/A | | 9.33 | | | 16.85 | #N/A | #N/A | |
| AGR | 4.12 | TĂNG | TĂNG | 3.89 | 3.95 | 5.91% | | 3.99 | 3.54 | 3.26% | |
| AMD | 1.81 | GIẢM | GIẢM | | 1.87 | | | | 2.08 | | |
| APG | 9.30 | TĂNG | TĂNG | 8.50 | 8.97 | 9.41% | | 9.90 | 7.90 | -6.06% | |
| ART | 2.40 | GIẢM | GIẢM | | 2.69 | | | | 3.19 | | |
| BCC | 8.80 | TĂNG | TĂNG | 8.50 | 8.21 | 3.53% | | 7.70 | 7.66 | 14.29% | |
| BCG | 5.63 | TĂNG | TĂNG | 5.90 | 5.61 | -4.58% | | 6.39 | 5.41 | -11.89% | |
| C69 | 17.50 | TĂNG | TĂNG | 8.80 | 15.73 | 98.86% | | 5.30 | 13.87 | 230.19% | |
| CCL | 5.94 | GIẢM | TĂNG | | 6.01 | | | 3.46 | 4.89 | 71.68% | |

We Create Fortune

| | | | | | | | | | | |
|-----|-------|------|------|-------|-------|--------|-------|-------|---------|-----|
| CRC | 14.80 | GIẢM | GIẢM | | 15.05 | | | 17.62 | | |
| CVT | 20.35 | TĂNG | TĂNG | 19.25 | 19.30 | 5.71% | | 20.33 | | |
| DAG | 6.82 | TĂNG | GIẢM | 6.55 | 6.59 | 4.12% | | 7.01 | | |
| DAH | 11.85 | TĂNG | TĂNG | 9.12 | 9.85 | 29.93% | 4.66 | 7.54 | 154.07% | |
| DGW | 22.90 | TĂNG | GIẢM | 21.85 | 21.98 | 4.81% | | 23.12 | | |
| DLG | 1.61 | TĂNG | GIẢM | 1.56 | 1.51 | 3.21% | | 1.65 | | |
| DRH | 7.15 | GIẢM | GIẢM | | 7.59 | | | 7.76 | | |
| DTD | 14.10 | TĂNG | TĂNG | 15.00 | 12.12 | -6.00% | 12.90 | 10.39 | 9.30% | |
| EVG | 2.84 | TĂNG | GIẢM | 2.87 | 2.77 | -1.05% | | 3.02 | | |
| FIT | 3.70 | TĂNG | TĂNG | 3.28 | 3.33 | 12.80% | 3.64 | 2.85 | 1.65% | |
| GKM | 15.50 | GIẢM | TĂNG | | 15.53 | | 11.42 | 14.95 | 35.67% | |
| HAH | 12.80 | TĂNG | TĂNG | 12.80 | 11.73 | 0.00% | | 12.67 | | |
| HAI | 1.83 | TĂNG | GIẢM | 1.87 | 1.75 | -2.14% | | 1.93 | | |
| HAP | 3.57 | GIẢM | TĂNG | | 3.75 | | 3.67 | 3.25 | -2.72% | |
| HAR | 3.97 | GIẢM | TĂNG | | 4.27 | | 3.71 | 3.65 | 7.01% | |
| HCD | 3.82 | TĂNG | GIẢM | 3.79 | 3.54 | 0.79% | | 4.34 | | |
| HDA | 12.00 | TĂNG | TĂNG | 10.50 | 11.07 | 14.29% | 11.30 | 11.19 | 6.19% | MUA |
| HDC | 15.15 | TĂNG | TĂNG | 15.25 | 14.73 | -0.66% | 15.25 | 13.30 | -0.66% | |
| HHP | 17.00 | GIẢM | #N/A | 19.10 | 17.27 | -9.60% | BÁN | - | #N/A | |
| HHS | 3.46 | GIẢM | GIẢM | | 3.46 | | | 3.74 | | |
| HII | 11.90 | GIẢM | GIẢM | | 12.48 | | | 13.80 | | |
| HQC | 1.40 | TĂNG | GIẢM | 1.43 | 1.36 | -2.10% | | 1.50 | | |
| HSL | 7.80 | GIẢM | GIẢM | | 8.33 | | | 10.17 | | |
| HUT | 2.40 | GIẢM | GIẢM | | 2.67 | | | 3.25 | | |
| HVG | 3.30 | TĂNG | GIẢM | 3.33 | 3.29 | -0.90% | | 4.67 | | |
| HVH | 27.05 | TĂNG | #N/A | 26.15 | 26.71 | 3.44% | - | #N/A | | |
| JVC | 2.88 | GIẢM | GIẢM | | 2.98 | | | 3.30 | | |
| KLF | 1.40 | GIẢM | GIẢM | | 1.61 | | | 1.79 | | |
| KMR | 2.99 | GIẢM | TĂNG | | 3.11 | | 3.68 | 2.65 | -18.75% | |
| LCG | 10.55 | TĂNG | GIẢM | 10.45 | 9.96 | 0.96% | | 11.44 | | |
| LGL | 9.98 | GIẢM | TĂNG | | 10.43 | | 7.11 | 8.90 | 40.30% | |
| LHG | 19.60 | TĂNG | TĂNG | 19.70 | 18.64 | -0.51% | 19.30 | 17.02 | 1.55% | |
| LMH | 16.20 | GIẢM | #N/A | | 17.01 | | - | #N/A | | |
| MST | 2.80 | GIẢM | GIẢM | | 3.15 | | | 3.78 | | |
| NDN | 16.50 | TĂNG | TĂNG | 14.10 | 15.74 | 17.02% | 13.10 | 14.40 | 25.91% | |
| PHC | 13.10 | TĂNG | TĂNG | 13.40 | 12.98 | -2.24% | 14.45 | 12.65 | -9.34% | |
| PVB | 19.20 | GIẢM | TĂNG | | 19.45 | | 20.10 | 16.79 | -4.48% | |
| PVC | 7.10 | GIẢM | TĂNG | | 7.25 | | 7.10 | 6.20 | 0.00% | |
| PXL | 5.50 | GIẢM | GIẢM | | 6.23 | | | 7.60 | | |



We Create Fortune

| | | | | | | | | | | | |
|------------|-------|------|------|-------|-------|--------|--|-------|-------|---------|--|
| PXS | 5.05 | TĂNG | TĂNG | 5.09 | 4.81 | -0.79% | | 4.85 | 4.26 | 4.12% | |
| QBS | 3.12 | TĂNG | GIẢM | 3.03 | 3.07 | 2.97% | | | 3.45 | | |
| SFG | 11.20 | GIẢM | GIẢM | | 12.97 | | | | 17.05 | | |
| SHI | 8.25 | GIẢM | TĂNG | | 8.30 | | | 6.23 | 7.45 | 32.37% | |
| SJF | 3.80 | TĂNG | GIẢM | 3.06 | 3.76 | 24.18% | | | 3.88 | | |
| SKG | 11.85 | GIẢM | GIẢM | | 12.54 | | | | 12.61 | | |
| TDH | 9.67 | GIẢM | TĂNG | | 9.95 | | | 11.65 | 9.17 | -17.00% | |
| TIG | 3.40 | GIẢM | TĂNG | | 3.61 | | | 3.20 | 3.03 | 6.25% | |
| TLD | 5.25 | GIẢM | GIẢM | | 5.51 | | | | 6.23 | | |
| TLH | 5.00 | GIẢM | TĂNG | | 5.09 | | | 5.85 | 4.80 | -14.53% | |
| TNI | 10.20 | GIẢM | GIẢM | | 10.83 | | | 12.15 | 10.21 | -15.98% | |
| TTF | 3.30 | GIẢM | TĂNG | | 3.40 | | | 3.99 | 3.03 | -17.29% | |
| TTH | 4.10 | GIẢM | GIẢM | | 4.12 | | | | 4.81 | | |
| TVB | 16.80 | GIẢM | GIẢM | | 17.22 | | | | 19.92 | | |
| TVC | 12.50 | TĂNG | GIẢM | 12.50 | 11.79 | 0.00% | | | 13.71 | | |
| VC3 | 23.10 | TĂNG | TĂNG | 23.10 | 22.86 | 0.00% | | 22.00 | 21.35 | 5.00% | |
| VCR | 22.70 | GIẢM | GIẢM | | 29.58 | | | 3.90 | 24.11 | 518.31% | |
| VNE | 4.29 | TĂNG | TĂNG | 4.35 | 4.24 | -1.38% | | 4.65 | 3.96 | -7.74% | |
| VPG | 21.70 | GIẢM | TĂNG | | 22.61 | | | 20.46 | 19.34 | 6.08% | |
| VRC | 15.75 | GIẢM | GIẢM | | 16.15 | | | | 17.69 | | |
| YBM | 10.30 | GIẢM | GIẢM | | 10.65 | | | | 12.42 | | |

We Create Fortune

胡志明市交易所 (HSX)

| | 收盤 | 漲跌% |
|----------|--------|-------|
| VNI | 978.63 | 0.51% |
| VN30 | 879.1 | 0.34% |
| VN Mid | 975.53 | 0.19% |
| VN Small | 826.55 | 0.17% |

河內交易所 (HSX)

| | 收盤 | 漲跌% |
|-----------|--------|-------|
| HNI | 106.01 | 0.83% |
| HN30 | 193.93 | 0.78% |
| VNX AllSh | 856.75 | 0.25% |

UPCOM 市場 (UPCoM)

| | 收盤 | 漲跌% |
|-------|-------|-------|
| UPCoM | 56.78 | 0.85% |

| 外資交易 | 成交值(十億盾) | |
|-------|----------|--|
| 買進 | 502.9 | |
| 賣出 | 387.79 | |
| 買超/賣超 | 115.11 | |

| 外資交易 | 成交值(十億盾) | |
|-------|----------|--|
| 買進 | 31.12 | |
| 賣出 | 8.10 | |
| 買超/賣超 | 23.02 | |

| 外資交易 | 成交值(十億盾) | |
|-------|----------|--|
| 買進 | 43.39 | |
| 賣出 | 42.57 | |
| 買超/賣超 | 0.82 | |

| 上漲排名/股碼 | 漲跌(VND) | 漲跌% |
|---------|---------|-------|
| HAX | 1200 | 6.82% |
| HPX | 1100 | 4.31% |
| FLC | 180 | 4.27% |
| TIP | 1000 | 3.33% |
| BID | 1050 | 3.24% |

| 上漲排名/股碼 | 漲跌(VND) | 漲跌% |
|---------|---------|-------|
| L14 | 3000 | 5.56% |
| DBC | 800 | 3.54% |
| BCC | 200 | 2.33% |
| ACB | 600 | 2.03% |
| SHB | 100 | 1.49% |

| 上漲排名/股碼 | 漲跌(VND) | 漲跌% |
|---------|---------|-------|
| KOS | 1300 | 5.35% |
| HND | 600 | 4.72% |
| SNZ | 1000 | 4.65% |
| NTC | 6200 | 3.80% |
| CTR | 1100 | 3.49% |

| 下跌排名/股碼 | 漲跌(VND) | 漲跌% |
|---------|---------|--------|
| SJS | -600 | -3.09% |
| YEG | -2400 | -2.76% |
| SFG | -300 | -2.61% |
| PAC | -800 | -2.23% |
| HDG | -750 | -2.14% |

| 下跌排名/股碼 | 漲跌(VND) | 漲跌% |
|---------|---------|--------|
| VCR | -1600 | -6.58% |
| TNG | -400 | -1.84% |
| NVB | -100 | -1.22% |
| NDN | -200 | -1.20% |
| PVS | -100 | -0.41% |

| 下跌排名/股碼 | 漲跌(VND) | 漲跌% |
|---------|---------|--------|
| SDI | -1700 | -2.25% |
| VGT | -200 | -1.89% |
| SIP | -1400 | -1.53% |
| MPC | -500 | -1.49% |
| VGI | -300 | -1.07% |

*備註：市值>5,000 億盾；成交值>15 億盾

| 市值排名/股碼 | 十億盾 | |
|---------|---------|--|
| VIC | 400,616 | |
| VHM | 279,349 | |
| VCB | 268,894 | |
| VNM | 217,674 | |
| GAS | 202,496 | |

| 市值排名/股碼 | 十億盾 | |
|---------|--------|--|
| ACB | 36,916 | |
| VCG | 11,573 | |
| PVS | 11,567 | |
| VCS | 10,678 | |
| PVI | 8,459 | |

| 市值排名/股碼 | 十億盾 | |
|---------|---------|--|
| ACV | 179,555 | |
| VGI | 85,589 | |
| VEA | 78,141 | |
| MCH | 58,157 | |
| GVR | 53,688 | |

| 交易量排名/股碼 | 成交值 | 30 日均 |
|----------|------------|------------|
| ROS | 11,887,920 | 11,400,556 |
| FLC | 10,732,840 | 3,100,044 |
| VPB | 8,416,229 | 2,635,169 |
| CTG | 5,419,950 | 3,051,698 |
| HAG | 5,380,720 | 3,999,173 |

| 交易量排名/股碼 | 成交值 | 30 日均 |
|----------|-----------|-----------|
| SHB | 5,949,174 | 5,031,710 |
| PVS | 3,552,858 | 2,742,557 |
| ACB | 2,082,872 | 945,775 |
| TNG | 1,138,849 | 1,162,204 |
| VCG | 939,431 | 577,362 |

| 交易量排名/股碼 | 成交值 | 30 日均 |
|----------|-----------|-----------|
| GVR | 2,100,200 | 974,873 |
| VIB | 1,019,962 | 317,899 |
| VGT | 865,234 | 327,064 |
| CTR | 804,621 | 309,590 |
| BSR | 799,984 | 1,103,171 |

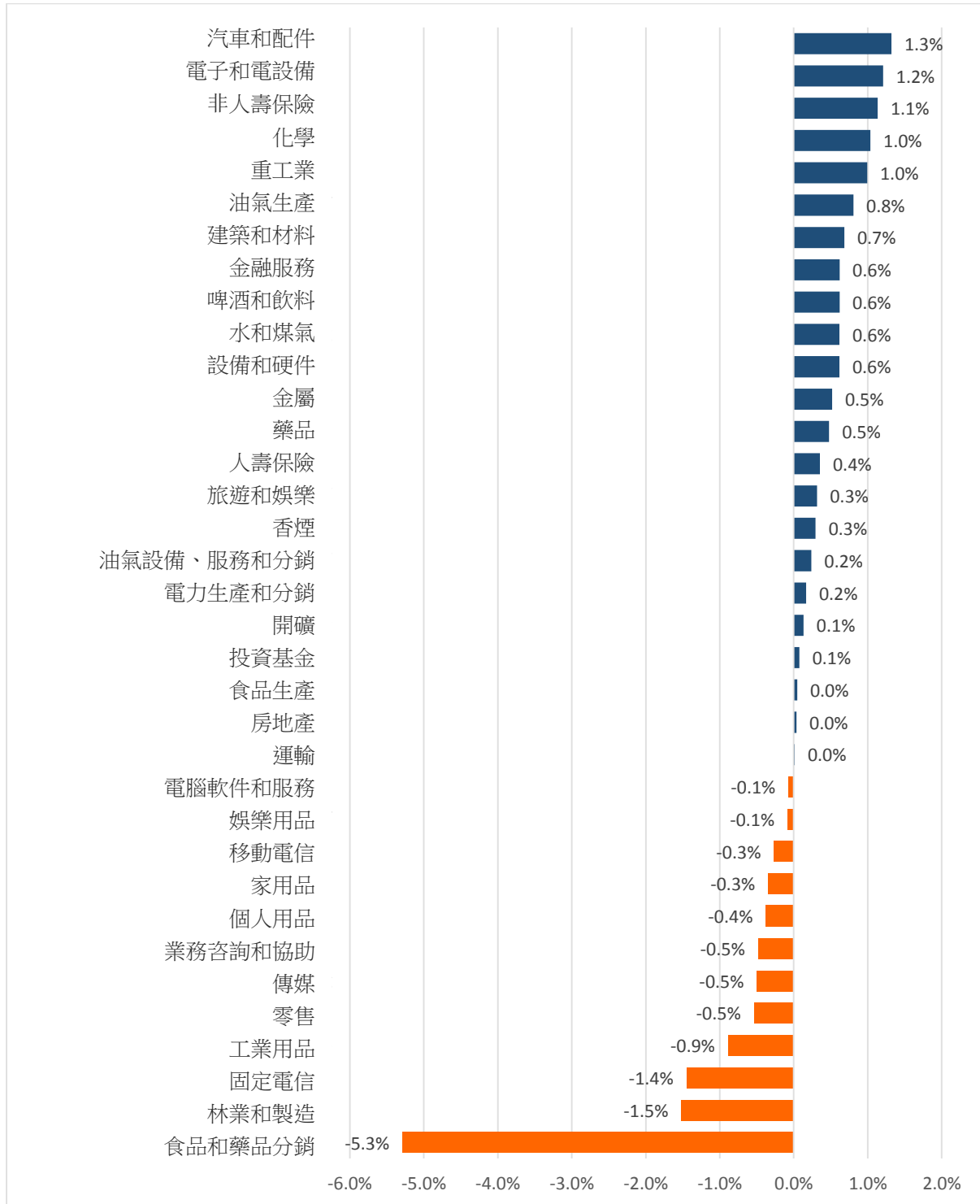
資料源: Bloomberg & Yuanta Research

資料源: Bloomberg & Yuanta Research

資料源: Bloomberg & Yuanta Research

We Create Fortune

各行業板塊的交易走勢



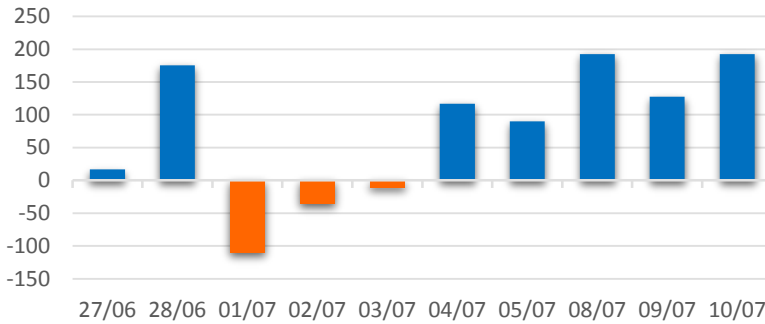
資料源: FiinPro – YSVN



We Create Fortune

外資買進賣統計

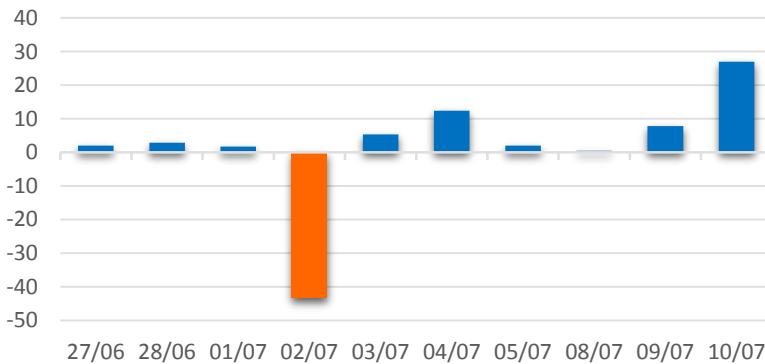
HSX 外資每日買/賣超



| 證券代碼 | 買超金額 (百萬盾) | 證券代碼 | 賣超金額 (百萬盾) |
|------------|------------|------------|------------|
| VCB | 31,258 | MSN | 30,420 |
| CTD | 27,817 | VIC | 16,801 |
| NVL | 21,063 | HBC | 15,138 |
| CTG | 19,405 | HPG | 10,807 |
| HVN | 18,542 | KDH | 4,648 |

HSX 外資買/賣超的前 5 名

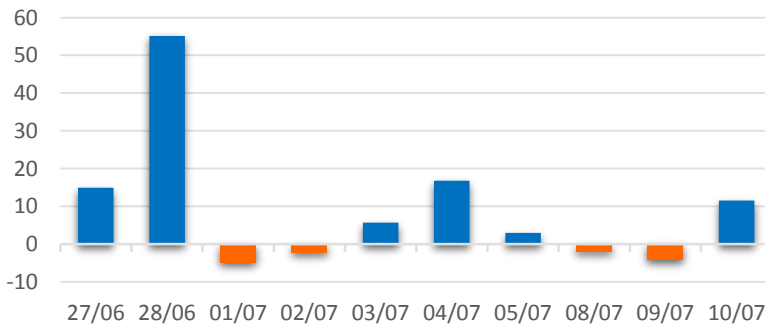
HNX 外資每日買/賣超



| 證券代碼 | 買超金額 (百萬盾) | 證券代碼 | 賣超金額 (百萬盾) |
|------------|------------|------------|------------|
| PVS | 25,560 | TNG | 1,764 |
| BCC | 1,225 | NTP | 1,165 |
| TIG | 821 | SHB | 937 |
| IDV | 178 | VGS | 388 |
| PVI | 91 | KST | 364 |

HNX 外資買/賣超的前 5 名

UPCOM 外資每日買/賣超



| 證券代碼 | 買超金額 (百萬盾) | 證券代碼 | 賣超金額 (百萬盾) |
|------------|------------|------------|------------|
| CTR | 3,017 | VEA | 2,783 |
| VGG | 1,010 | ACV | 2,345 |
| GEG | 796 | BSR | 2,255 |
| GVR | 777 | WSB | 213 |
| QNS | 684 | BUD | 185 |

UPCOM 外資買/賣超的前 5 名

源: FiinPro – YSVN



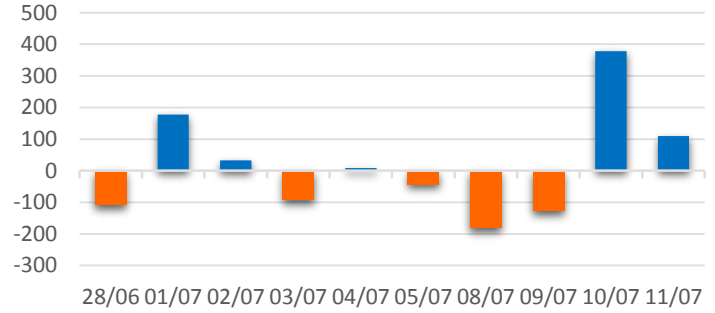
We Create **Fortune**

自營進出統計

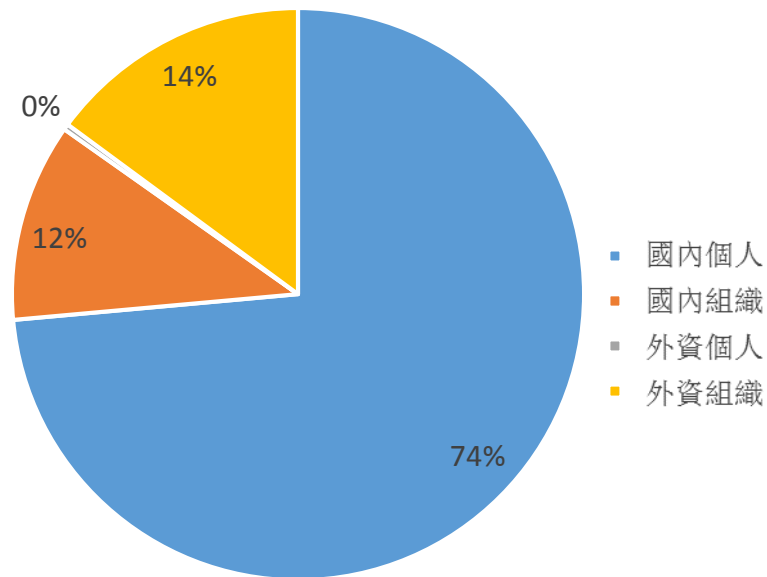
| 證券代碼 | 買超金額 (百萬盾) | 證券代碼 | 賣超金額 (百萬盾) |
|------|------------|---------|------------|
| KBC | 48,281 | DBD | 3,973 |
| NKG | 26,670 | AAA | 2,738 |
| VRE | 6,281 | CTD | 2,709 |
| VPB | 701 | VNM | 1,879 |
| MWG | 4,167 | E1VFN30 | 683 |

券商自營交易最大前名

券商自營交易每日買/賣超 (bil. VND)



越南證券市場投資人類別統計

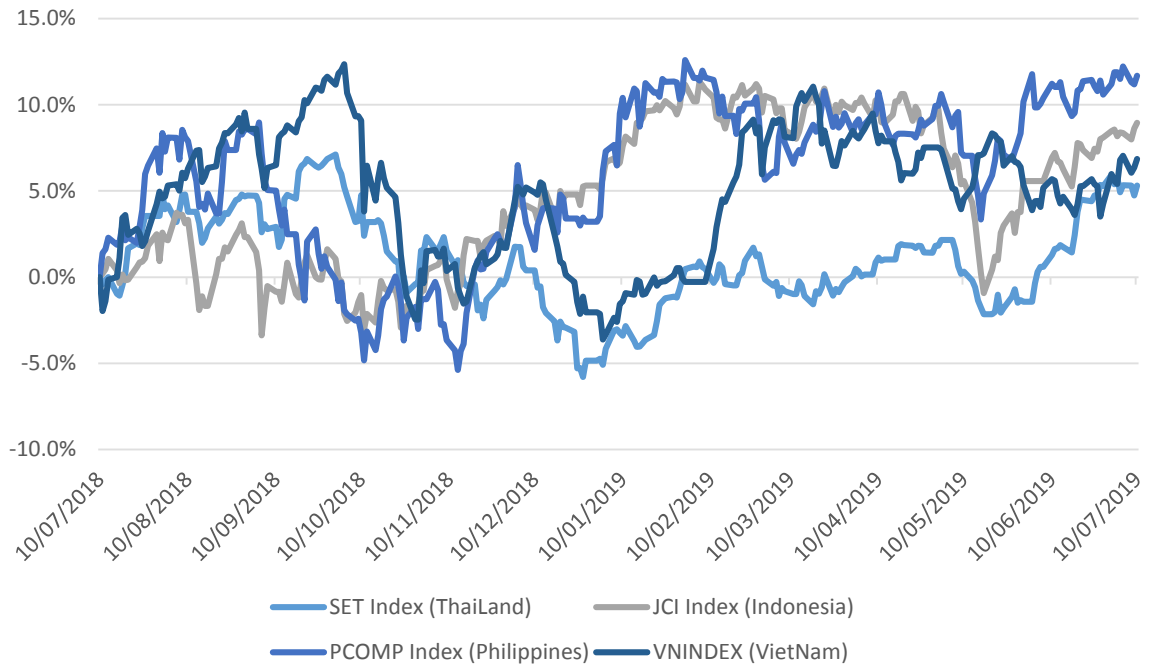


資料源: FimPro – YSVN



We Create Fortune

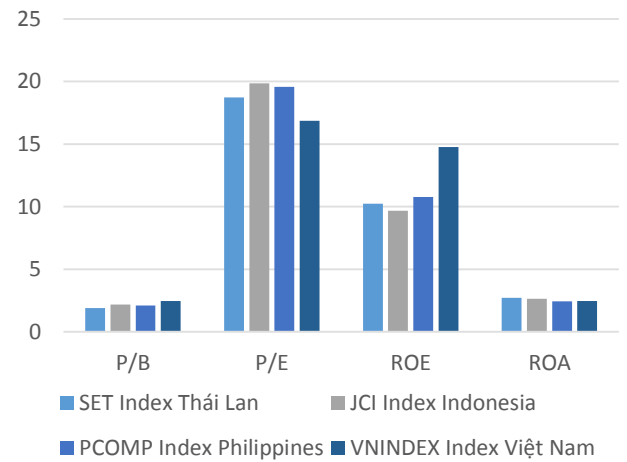
東南亞主要市場走勢比較



東南亞主要市場數據

| | | Thailand | Indonesia | Philippines | Vietnam |
|-----------|-----------|----------|-----------|-------------|---------|
| P/B | | 1.9x | 2.2x | 2.1x | 2.5x |
| P/E | | 18.7x | 19.9x | 19.6x | 16.9x |
| ROE | % | 10.23 | 9.67 | 10.78 | 14.77 |
| ROA | % | 2.71 | 2.64 | 2.43 | 2.46 |
| Vốn hóa | Tỷ USD | 571.24 | 519.26 | 196.75 | 140.53 |
| GTGD | Triệu USD | 1.69 | 0.43 | 0.07 | 0.12 |
| LS cổ tức | % | 2.98 | 2.43 | 1.63 | 1.77 |

BloomBerg & YSVN





We Create **Fortune**

元大證券（越南）公司

個人客戶分析部

Nguyễn Thế Minh

研究分析經理

+84 28 3622 6868 ext 3826
minh.nguyen@yuanta.com.vn

Quách Đức Khánh

高級分析專員

+84 28 3622 6868 ext 3833
khanh.quach@yuanta.com.vn

Nguyễn Trịnh Ngọc Hồng

分析專員

+84 28 3622 6868 ext 3832
hong.nguyen@yuanta.com.vn

Phạm Tân Phát

高級分析專員

+84 28 3622 6868 ext 3830
phat.pham@yuanta.com.vn

個人客戶業務部

Nguyễn Thanh Tùng

總公司業務經理

+84 28 3622 6868 ext 3609
tung.nguyen@yuanta.com.vn

Chung Kim Hoa

華人客戶部經理

+84 28 3622 6868 ext 3828
hoa.chung@yuanta.com.vn

Phù Vĩnh Qué

堤岸分行經理

+84 28 3622 6868
que.phu@yuanta.com.vn

Nguyễn Việt Quang

河內分行經理

+84 28 3622 6868 ext 3404
quang.nguyen@yuanta.com.vn

Võ Thị Thu Thủy

平陽分行經理

+84 28 3622 6868 ext 3505
thuy.vo@yuanta.com.vn

Bùi Quốc Phong

同奈分行經理

+84 28 3622 6868
phong.bui@yuanta.com.vn

Nguyễn Đức Hoàn

河內南部營業中心經理

+84 28 3622 6868 ext 3409
hoan.nguyen@yuanta.com.vn



We Create **Fortune**

Appendix A: Important Disclosures

Analyst Certification

Each research analyst primarily responsible for the content of this research report, in whole or in part, certifies that with respect to each security or issuer that the analyst covered in this report: (1) all of the views expressed accurately reflect his or her personal views about those securities or issuers; and (2) no part of his or her compensation was, is, or will be, directly or indirectly, related to the specific recommendations or views expressed by that research analyst in the research report.

Ratings Definitions

BUY: We have a positive outlook on the stock based on our expected absolute or relative return over the investment period. Our thesis is based on our analysis of the company's outlook, financial performance, catalysts, valuation and risk profile. We recommend investors add to their position.

HOLD-Outperform: In our view, the stock's fundamentals are relatively more attractive than peers at the current price. Our thesis is based on our analysis of the company's outlook, financial performance, catalysts, valuation and risk profile.

HOLD-Underperform: In our view, the stock's fundamentals are relatively less attractive than peers at the current price. Our thesis is based on our analysis of the company's outlook, financial performance, catalysts, valuation and risk profile.

SELL: We have a negative outlook on the stock based on our expected absolute or relative return over the investment period. Our thesis is based on our analysis of the company's outlook, financial performance, catalysts, valuation and risk profile. We recommend investors reduce their position.

Under Review: We actively follow the company, although our estimates, rating and target price are under review.

Restricted: The rating and target price have been suspended temporarily to comply with applicable regulations and/or Yuanta policies.

Note: Yuanta research coverage with a Target Price is based on an investment period of 12 months. Greater China Discovery Series coverage does not have a formal 12 month Target Price and the recommendation is based on an investment period specified by the analyst in the report.

Global Disclaimer

© 2018 Yuanta. All rights reserved. The information in this report has been compiled from sources we believe to be reliable, but we do not hold ourselves responsible for its completeness or accuracy. It is not an offer to sell or solicitation of an offer to buy any securities. All opinions and estimates included in this report constitute our judgment as of this date and are subject to change without notice.

This report provides general information only. Neither the information nor any opinion expressed herein constitutes an offer or invitation to make an offer to buy or sell securities or other investments. This material is prepared for general circulation to clients and is not intended to provide tailored investment advice and does not take into account the individual financial situation and objectives of any specific person who may receive this report. Investors should seek financial advice regarding the appropriateness of investing in any securities, investments or investment strategies discussed or recommended in this report. The information contained in this report has been compiled from sources believed to be reliable but no representation or warranty, express or implied, is made as to its accuracy, completeness or correctness. This report is not (and should not be construed as) a solicitation to act as securities broker or dealer in any jurisdiction by any person or company that is not legally permitted to carry on such business in that jurisdiction.

Yuanta research is distributed in the United States only to Major U.S. Institutional Investors (as defined in Rule 15a-6 under the Securities Exchange Act of 1934, as amended and SEC staff interpretations thereof). All transactions by a US person in the securities mentioned in this report must be effected through a registered broker-dealer under Section 15 of the Securities Exchange Act of 1934, as amended. Yuanta research is distributed in Taiwan by Yuanta Securities Investment Consulting. Yuanta research is distributed in Hong Kong by Yuanta Securities (Hong Kong) Co. Limited, which is licensed in Hong Kong by the Securities and Futures Commission for regulated activities, including Type 4 regulated activity (advising on securities). In Hong Kong, this research report may not be redistributed, retransmitted or disclosed, in whole or in part or any form or manner, without the express written