

## 當日市場：投資者的情緒重新穩定

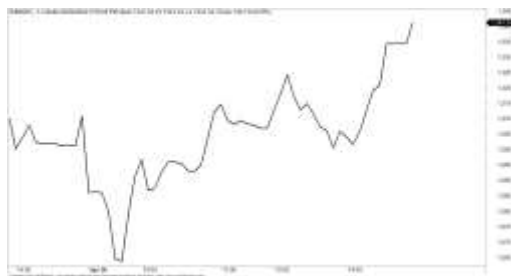
2022/04/27

### 市場走勢

市場指數	VNI	HNI	UPCOM
收盤	1,341.34	345.17	101.15
%日	2.32%	2.27%	1.62%
%週	-4.63%	-12.10%	-6.62%
%月	-10.49%	-25.25%	-13.55%
%年	10.33%	22.98%	27.36%
<b>成交值(Bil.VND)</b>			
當日	20,978	2,410	974
日均量/週	22,378	2,492	1,345
日均量/月	24,112	2,962	1,718
<b>外資進出</b>			
買進	2,849.28	14.78	13.99
賣出	1,809.33	37.96	12.58
買賣超	1,039.96	-23.18	1.41
<b>市場漲跌家數</b>			
上漲	287	172	128
下跌	92	64	221
持平	46	118	554
<b>市場指標</b>			
P/E	14.68	16.86	20.46
總市值 (兆盾)	5,226	393	1,325
股息殖利率	2.62%	4.66%	4.60%

資料源: Bloomberg - YSVN

VNINDEX



HNIINDEX



### 市場走勢

當日出現抄底需求的走勢，幫助指數反轉上漲。VN-Index 上漲 2.32%，收於 1341.34 點，HNX-Index 上漲 2.27%，Upcom-Index 上漲 1.62%。3 大市場的交易額為 21 兆 9,820 億越南盾。

在需求較為活躍時，漲幅在寬度出現，幫助許多股票大幅上漲，如 GAS、MSN、SAB、BVH、VPB、VRE、POW 等股票上漲超過 3%。相比之下，VCB 和 VJC 是 VN30-Index 的唯一兩檔下跌股票。銀行、證券和房地產是當日在漲幅中最突出的板塊。

相反，海鮮股依然被強勁拋售，如 CMX、IDI、VHC 仍收盤下跌。

外資繼續強勁買超超過 1 兆 190 億越南盾。VNM（820 億）、DGC（740 億）、DPM（640 億）在買超方面領先。相反，NVL（700 億）、VHM（600 億）、KBC（330 億）被拋售最多的股票。

### 市場短期觀點

我們認為市場可能會繼續恢復，VN-Index 可能在下個交易日重新測試 1,370 點。同時，積極點是如果該股票在接下來的兩個交易日中保持上漲勢頭，銀行股的短期風險會出現下跌的跡象。此外，短期情緒指標仍處於過度悲觀區間，顯示市場可能會出現短期恢復階段。

大盤短期走勢仍為下跌。因此，我們建議短期投資者在本期可以繼續觀察市場，並不應買進。此外，短期投資者仍應優先在恢復區間降低保證金的比例以降低投資組合風險，並在跌幅不應拋售，因為市場仍處於恢復的階段。

請在 <https://ysradar.yuanta.com.vn/> 查看有關股票的信號。

We Create Fortune

熱門技術分析圖



We Create Fortune

技術分析圖



指數技術分析圖 VN-Index



指數技術分析圖 HNX-Index

指數	短期趨勢	中期趨勢	阻力區 1	阻力區 2	支撐區 1	支撐區 2
VN-Index	下跌	下跌	1500	1530	1310	970
HNX-Index	下跌	下跌	470	500	300	180
VN30	下跌	下跌	1550	1570	1445	960
VNMidcaps	下跌	下跌	1,730	1800	1650	963
VNSmallcaps	下跌	下跌	1430	1450	1400	804

We Create Fortune

胡志明市交易所 (HSX)

	收盤	漲跌%
VNI	1341.34	2.32%
VN30	1396.9	2.23%
VN Mid	1844.36	3.08%
VN Small	1758.4	2.53%

河內交易所 (HSX)

	收盤	漲跌%
HNI	345.17	2.27%
HN30	604.89	2.31%
VNX AllSh	1372.78	2.50%

UPCOM 市場 (UPCoM)

	收盤	漲跌%
UPCoM	101.15	1.62%

外資交易	成交值 (BiL.VND)
買進	2849.28
賣出	1809.33
買超/賣超	1039.96

外資交易	成交值 (BiL.VND)
買進	14.78
賣出	37.96
買超/賣超	-23.18

外資交易	成交值 (BiL.VND)
買進	13.99
賣出	12.58
買超/賣超	1.41

上漲排名/ 股碼	漲跌(VND)	漲跌%
NLG	2950	7.00%
APG	680	7.00%
DRC	2000	6.99%
CNG	2500	6.98%
HAI	250	6.98%

上漲排名/ 股碼	漲跌(VND)	漲跌%
API	4400	10.00%
CEO	3400	9.91%
TAR	2100	9.91%
PVC	1600	9.88%
IDJ	1500	9.87%

上漲排名/ 股碼	漲跌(VND)	漲跌%
SZG	1841	4.86%
VOC	417	1.88%
BVB	153	0.97%
BOT	94	0.91%
ACG	396	0.56%

下跌排名/ 股碼	漲跌(VND)	漲跌%
ACL	-2000	-6.97%
CTR	-7000	-6.92%
AGM	-2500	-6.87%
ELC	-1550	-6.86%
MIG	-1900	-6.85%

下跌排名/ 股碼	漲跌(VND)	漲跌%
IDC	-3100	-5.78%
PSD	-1500	-4.13%
NRC	-400	-2.16%
VCS	-1500	-1.45%
TVD	-100	-0.70%

下跌排名/ 股碼	漲跌(VND)	漲跌%
C4G	-2119	-12.32%
HTG	-5009	-8.52%
VCR	-2269	-6.92%
VNA	-2943	-6.64%
TCI	-784	-6.13%

\*備註: 市值>5,000 億盾; 成交值>15 億盾

市值排名/ 股碼	BiL.VND
VCB	387,120
VIC	290,622
VHM	274,325
GAS	200,008
HPG	182,272

市值排名/ 股碼	BiL.VND
THD	37,415
KSF	32,250
NVB	20,045
VCS	16,560
IDC	16,080

市值排名/ 股碼	BiL.VND
ACV	186,778
MCH	78,094
BSR	64,738
VEA	61,630
SSH	37,341

交易量排名/ 股碼	成交值	30 日均
HDB	26,887,900	4,049,060
HPG	23,450,100	17,272,895
VPB	22,776,100	23,570,940
HAG	16,597,500	21,002,800
GEX	15,693,200	18,577,315

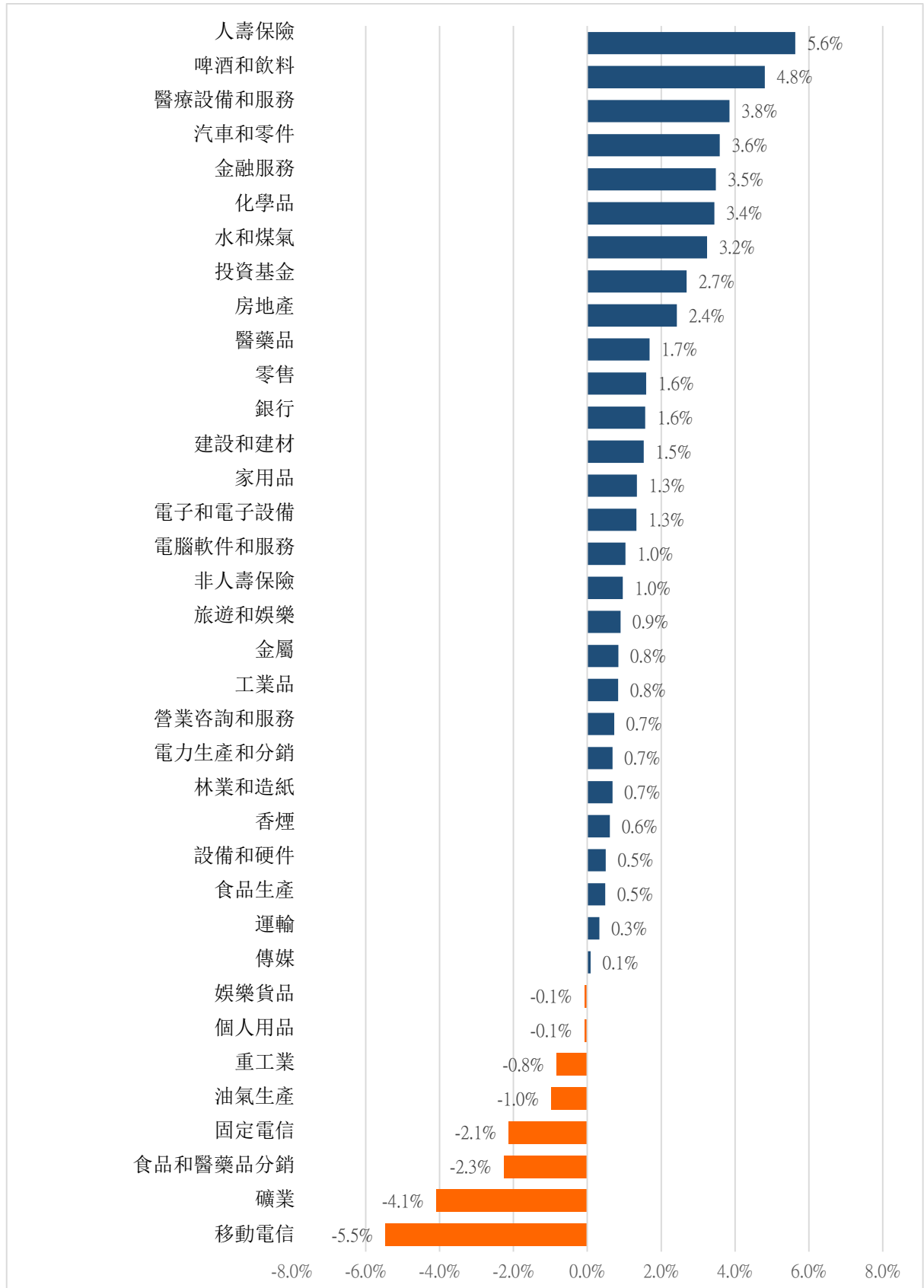
交易量排名/ 股碼	成交值	30 日均
NVB	12,857,714	211,485
PVS	11,559,057	9,250,210
IDC	7,935,335	6,141,277
CEO	6,952,626	4,574,615
SHS	5,435,086	5,222,438

交易量排 名/股碼	成交值	30 日均
BSR	9,214,279	6,371,461
C4G	7,415,017	3,643,092
VHG	4,886,873	6,049,142
VGT	2,994,102	4,109,298
ABB	2,043,791	2,219,843

資料源: Bloomberg & Yuanta Research

We Create Fortune

## 各行業板塊的交易走勢

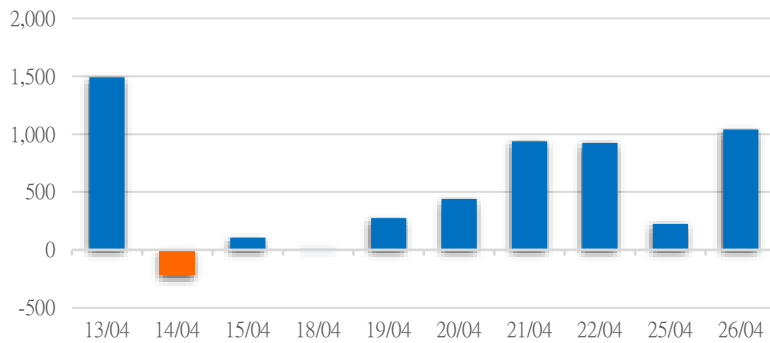


資料源: FiinPro - YSVN

We Create Fortune

## 外資買進賣統計

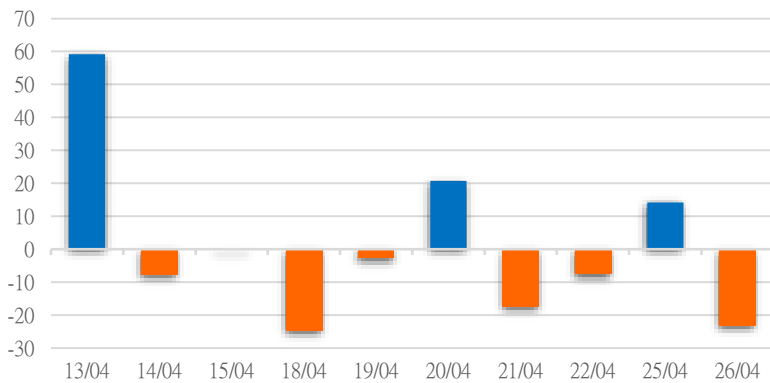
HSX 外資每日買/賣超



證券代碼	買超金額 (Mil.VND)	證券代碼	賣超金額 (Mil.VND)
VNM	81,746	NVL	70,297
DGC	74,073	VHM	60,168
DPM	64,366	KBC	33,070
BVH	48,656	HPG	29,830
DCM	46,958	STB	23,285

HSX 外資買/賣超的前 5 名

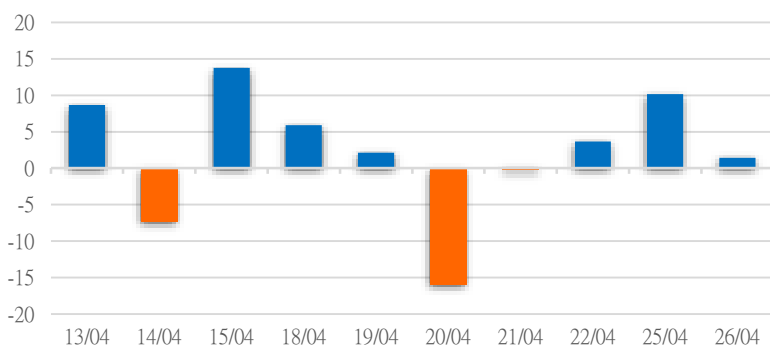
HNX 外資每日買/賣超



證券代碼	買超金額 (Mil.VND)	證券代碼	賣超金額 (Mil.VND)
PVI	954	SHS	10,093
TA9	462	IDC	7,413
CLH	358	PVS	5,702
IVS	226	IDJ	761
VHL	225	THD	682

HNX 外資買/賣超的前 5 名

UPCOM 外資每日買/賣超



證券代碼	買超金額 (Mil.VND)	證券代碼	賣超金額 (Mil.VND)
LTG	1,976	NTC	3,250
TCI	1,416	VEA	1,534
ACV	1,257	VOC	841
QNS	854	CSI	556
CLX	611	MSR	457

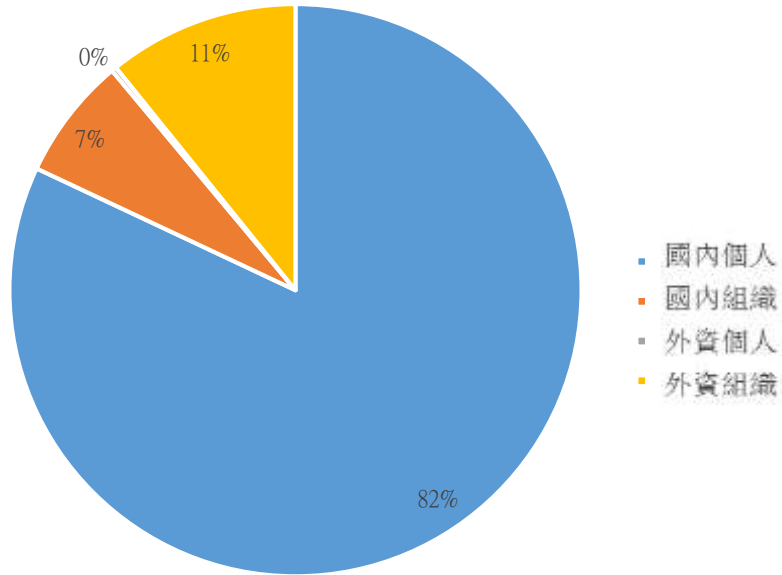
UPCOM 外資買/賣超的前 5 名

源: FiinPro - YSVN



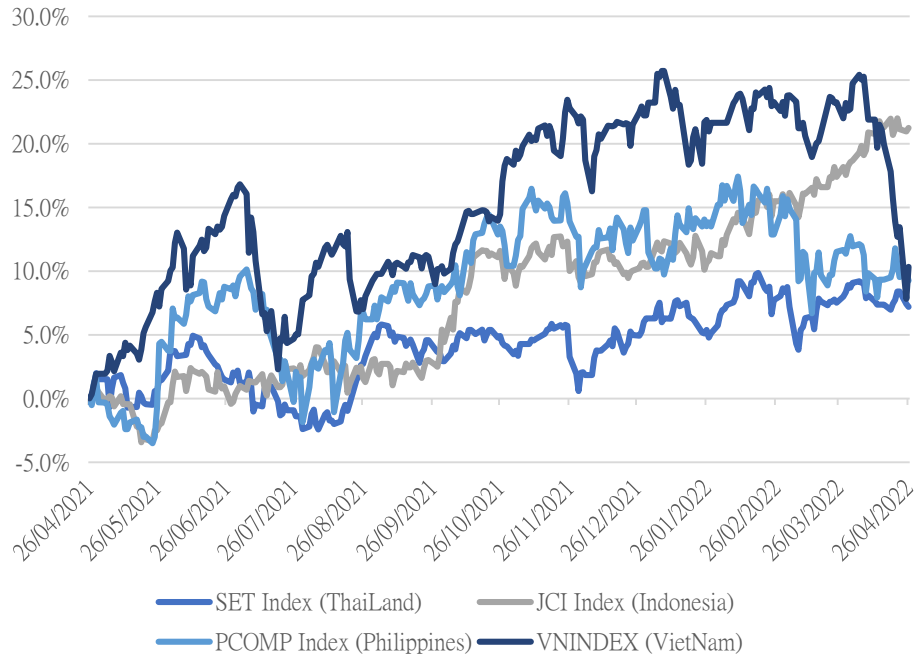
We Create **Fortune**

### 越南證券市場投資人類別統計



資料源: FiinPro - YSVN

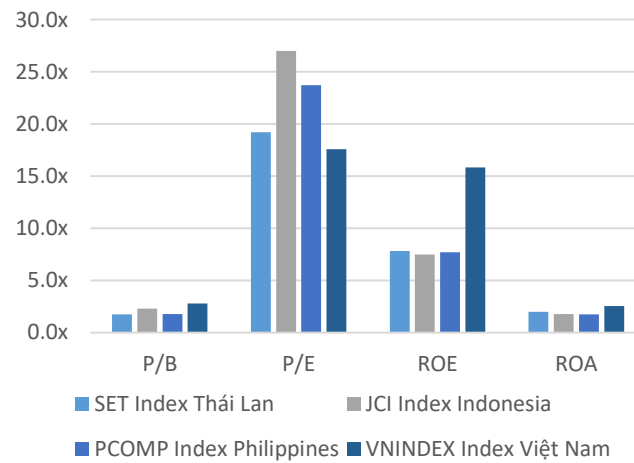
### 東南亞主要市場走勢比較



東南亞主要市場數據

		Thailand	Indonesia	Philippines	Vietnam
P/B		1.7x	2.2x	1.7x	2.3x
P/E		18.1x	21.68	21.7x	15.1x
ROE	%	9.62	9.85	8.16	15.70
ROA	%	2.44	2.48	1.83	2.57
Vốn hóa	Tỷ USD	575.45	654.69	185.70	226.17
GTGD	Triệu USD	1.88	0.99	0.06	0.85
LS cổ tức	%	2.68	2.06	1.75	1.24

源: Bloomberg & YSVN







We Create Fortune

## 元大證券（越南）公司

### 個人客戶分析部

**Nguyễn Thế Minh**  
研究分析經理  
+84 28 3622 6868 ext 3826  
minh.nguyen@yuanta.com.vn

**Lý Thị Hiền**  
研究分析主管  
+84 28 3622 6868 ext 3908  
hien.ly@yuanta.com.vn

**Quách Đức Khánh**  
研究分析副主管  
+84 28 3622 6868 ext 3833  
khanh.quach@yuanta.com.vn

**Khổng Hữu Hiệp**  
高級分析專員  
+84 28 3622 6868 ext 3912  
hiep.khong@yuanta.com.vn

**Nguyễn Trịnh Ngọc Hồng**  
高級分析專員  
+84 28 3622 6868 ext 3832  
hong.nguyen@yuanta.com.vn

**Phạm Tấn Phát**  
高級分析專員  
+84 28 3622 6868 ext 3880  
phat.pham@yuanta.com.vn

### 個人客戶業務部

**Phạm Đắc Thành**  
北部分行經理  
+84 28 3622 6868 ext 3416  
thanh.pham@yuanta.com.vn

**Võ Thị Thu Thủy**  
平陽分行經理  
+84 28 3622 6868 ext 3505  
thuy.vo@yuanta.com.vn

**Lương Kỳ Ty**  
堤岸分行經理  
+84 28 3622 6868 ext 3653  
ty.luong@yuanta.com.vn

**Bùi Quốc Phong**  
同奈分行經理  
+84 28 3622 6868 ext 3701  
phong.bui@yuanta.com.vn

**Võ Đình Tuấn**  
峴港分行經理  
+84 28 3622 6868 ext 3301  
tuan.vo@yuanta.com.vn

**Nguyễn Việt Quang**  
河內分行經理  
+84 28 3622 6868 ext 3404  
quang.nguyen@yuanta.com.vn

**Đinh Thị Thu Cúc**  
頭頓分行經理  
+84 28 3622 6868 ext 3203  
cuc.dinh@yuanta.com.vn

## Appendix A: Important Disclosures

### Analyst Certification

Each research analyst primarily responsible for the content of this research report, in whole or in part, certifies that with respect to each security or issuer that the analyst covered in this report: (1) all of the views expressed accurately reflect his or her personal views about those securities or issuers; and (2) no part of his or her compensation was, is, or will be, directly or indirectly, related to the specific recommendations or views expressed by that research analyst in the research report.

### Ratings Definitions

**BUY:** We have a positive outlook on the stock based on our expected absolute or relative return over the investment period. Our thesis is based on our analysis of the company's outlook, financial performance, catalysts, valuation and risk profile. We recommend investors add to their position.

**HOLD-Outperform:** In our view, the stock's fundamentals are relatively more attractive than peers at the current price. Our thesis is based on our analysis of the company's outlook, financial performance, catalysts, valuation and risk profile.

**HOLD-Underperform:** In our view, the stock's fundamentals are relatively less attractive than peers at the current price. Our thesis is based on our analysis of the company's outlook, financial performance, catalysts, valuation and risk profile.

**SELL:** We have a negative outlook on the stock based on our expected absolute or relative return over the investment period. Our thesis is based on our analysis of the company's outlook, financial performance, catalysts, valuation and risk profile. We recommend investors reduce their position.

**Under Review:** We actively follow the company, although our estimates, rating and target price are under review.

**Restricted:** The rating and target price have been suspended temporarily to comply with applicable regulations and/or Yuanta policies.

Note: Yuanta research coverage with a Target Price is based on an investment period of 12 months. Greater China Discovery Series coverage does not have a formal 12 month Target Price and the recommendation is based on an investment period specified by the analyst in the report.

### Global Disclaimer

© 2018 Yuanta. All rights reserved. The information in this report has been compiled from sources we believe to be reliable, but we do not hold ourselves responsible for its completeness or accuracy. It is not an offer to sell or solicitation of an offer to buy any securities. All opinions and estimates included in this report constitute our judgment as of this date and are subject to change without notice.

This report provides general information only. Neither the information nor any opinion expressed herein constitutes an offer or invitation to make an offer to buy or sell securities or other investments. This material is prepared for general circulation to clients and is not intended to provide tailored investment advice and does not take into account the individual financial situation and objectives of any specific person who may receive this report. Investors should seek financial advice regarding the appropriateness of investing in any securities, investments or investment strategies discussed or recommended in this report. The information contained in this report has been compiled from sources believed to be reliable but no representation or warranty, express or implied, is made as to its accuracy, completeness or correctness. This report is not (and should not be construed as) a solicitation to act as securities broker or dealer in any jurisdiction by any person or company that is not legally permitted to carry on such business in that jurisdiction.

Yuanta research is distributed in the United States only to Major U.S. Institutional Investors (as defined in Rule 15a-6 under the Securities Exchange Act of 1934, as amended and SEC staff interpretations thereof). All transactions by a US person in the securities mentioned in this report must be effected through a registered broker-dealer under Section 15 of the Securities Exchange Act of 1934, as amended. Yuanta research is distributed in Taiwan by Yuanta Securities Investment Consulting. Yuanta research is distributed in Hong Kong by Yuanta Securities (Hong Kong) Co. Limited, which is licensed in Hong Kong by the Securities and Futures Commission for regulated activities, including Type 4 regulated activity (advising on securities). In Hong Kong, this research report may not be redistributed, retransmitted or disclosed, in whole or in part or and any form or manner, without the express written