

## 市場逼近強勁阻力位

2024/01/18

合約走勢					
	收盤	+/-	交易量	到期日	剩餘時間
單位	點數	點數	合約	日期	日
VN30F2112	1166.0	-6.0	228,003	18/01	2
VN30F2201	1169.0	-6.0	27903	15/02	31
VN30F2203	1168.3	1.2	322	21/03	66
VN30F2206	1167.8	-2.1	38	20/06	157

源自 Bloomberg - YSVN

合約更改交易量和持倉量				
	交易量	+/-	OI	+/-
單位	合約	%		%
VN30F2112	228,003	29.6%	61,447	
VN30F2201	27,903	127.7%	1744	
VN30F2203	322	30.9%	1,042	
VN30F2206	38	31.0%	210	

源自：Bloomberg - YSVN

合約的基差變動			
	基差	前一盤	+/-
單位	點數	點數	點數
VN30F2112	-0.6	1.8	-2.4
VN30F2201	2.4	1.8	0.6
VN30F2203	1.7	-3.1	4.8
VN30F2206	1.2	-0.3	1.5

源自：Bloomberg - YSVN

### 合約走勢

- 4 個期貨合約在早盤上漲，但在午盤反轉下跌，並收盤下跌 2-6 點。VN30F1M 基差折現 -0.6 點，顯示隨著到期日的臨近，市場仍保持謹慎態度。
- 4 個期貨合約的成交量均有所改善，與前一交易日相比，VN30F2401 增加 30%，VN30F2402 增加 128%，VN30F2403 增加 31%，VN30F2406 增加 31%。

### VN30F1M 的評估

- VN30F2401 出現漲跌交替的燭台，顯示期貨市場猶豫不決。同時，1175-1180 點區域是舊頂與斐波那契 61.8% 收斂時的強勁技術阻力位。同時，VN30F2401 仍處於上漲波浪，並保持在 1158-1160 點以上。
- VN30F2401 合約的短期趨勢在日線圖上維持上漲，並可能在 1175-1182 點附近的阻力位，而可能在日線趨勢追蹤停損於 1142 點。

### 投資策略

<p><b>當天策略</b> (Intraday)</p>	<p>當價格弱勢復甦至 1170 或 1175 點時，投資者考慮開設空頭，停損於 1,176 點。</p> <p>當價格在 1162 點的積極反應時考慮開設多頭，停損於 1160 點。</p>
<p><b>主要短期趨勢策略</b> (Daily)</p>	<p>投資者保持觀察倉位，並等待新的入場點。</p>

Pham Tan Phat

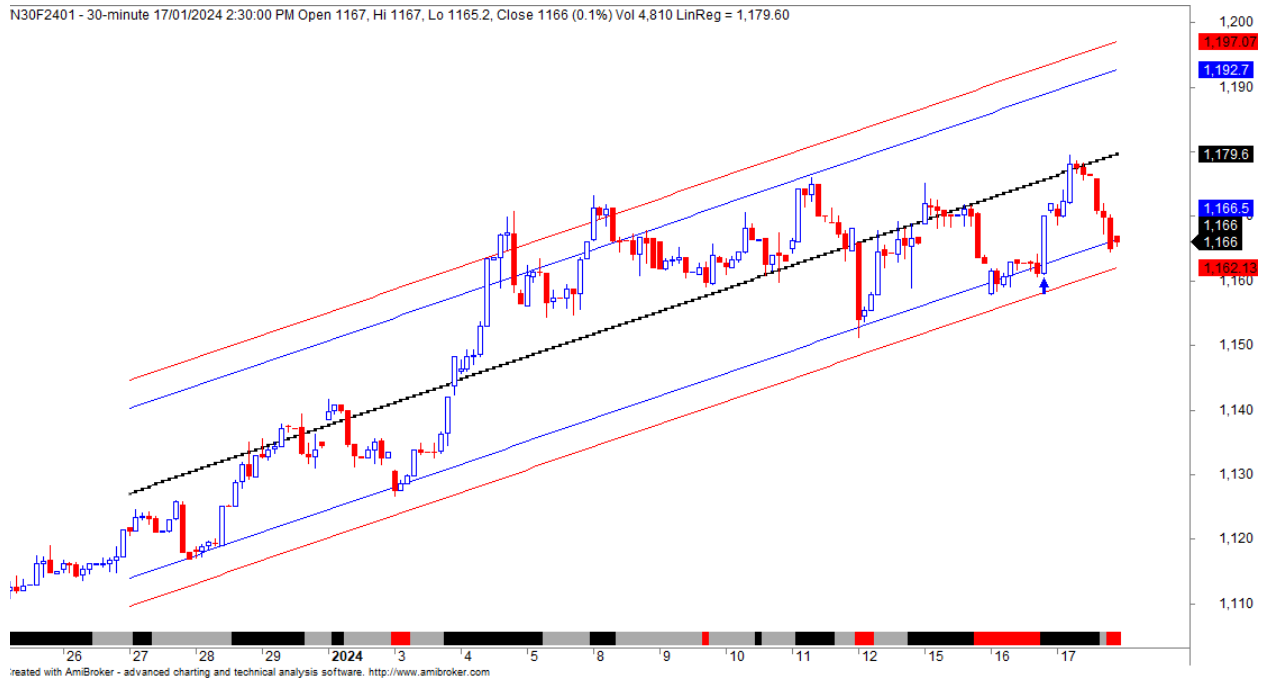
高級分析專員

Email: [phat.pham@yuanta.com.vn](mailto:phat.pham@yuanta.com.vn)

Phone: (084) 28 3622 6868 ext 3880



## VN30F1M 合約走勢圖

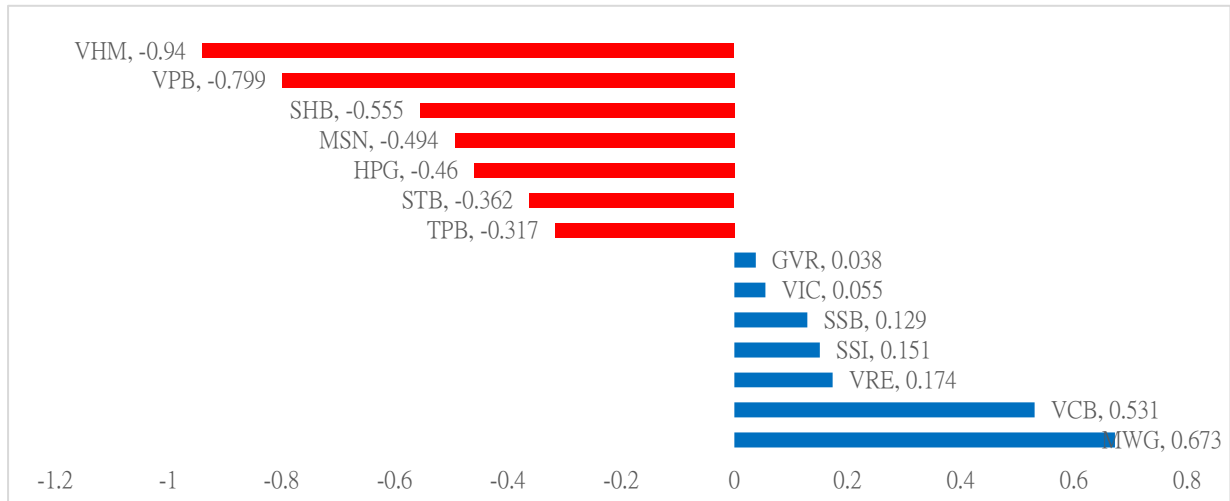


	VN30F2401-Daily	VN30F2401-1H
趨勢	上漲	下跌
支撐 1	1142	1162
支撐 2	1117	1158
阻力 1	1175	1170
阻力 2	1182	1175

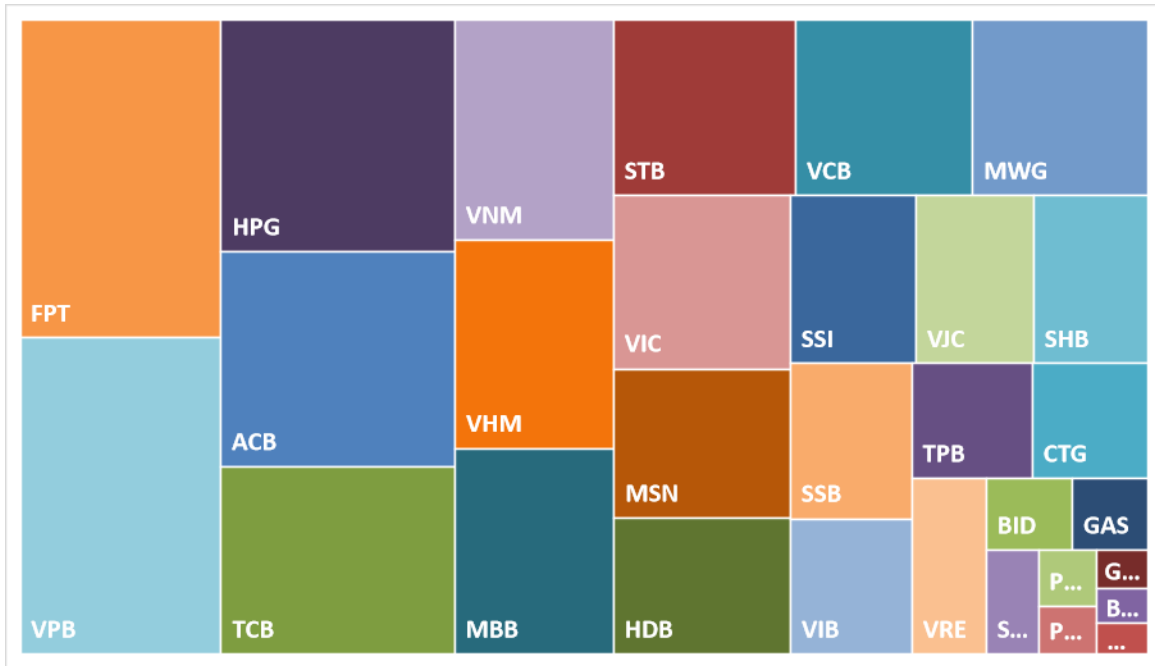
## VN30-INDEX 指數走勢

VN30-Index 收盤下跌 0.31%，其中 VHM、VPB 和 SHB 導致指數下跌最多的股票。相反，VHM、VPB 和 SHB 幫助指數得分的股票。

## VN30-INDEX 中最有影響力的成份股



### VN30-INDEX 中的資本化



### MWG 的走勢圖



**VN30-INDEX 中的成分股**

股碼	公司名稱	行業	比重	收盤價	資本化	PER	PBR	3 個月平均交易量	外資持有	52 週最高	52 週最底
		單位	%	VND	Bil. VND	x	x	'000 cp	%	VND	VND
BID	越南投資與發展商業股份銀行	金融	7.3%	25,250	98,072	6.6	1.5	6,865	30%	25,750	19,957
KDH	Khang Dien 房屋貿易投資股份公司	房地產	0.2%	59,200	61,272	123.0	3.6	361	2%	86,000	56,500
CTG	越南工商股份銀行	金融	0.9%	47,400	270,201	13.8	2.4	1,089	17%	47,800	34,608
ACB	亞洲商業股份銀行	金融	0.2%	40,500	30,064	17.4	1.4	304	26%	51,800	38,600
PLX	越南油氣集團	能源	2.1%	31,000	166,470	9.2	1.4	3,713	27%	31,150	24,252
BVH	Bao Viet 集團	金融	8.4%	94,700	120,266	19.6	5.1	2,302	49%	100,800	67,043
FPT	FPT 發展投資工藝股份公司	科技	0.7%	75,500	173,404	13.8	2.8	643	3%	93,250	74,200
GAS	越南氣體總公司 - 股份公司	公用服務	0.3%	21,600	86,400	36.8	1.7	2,308	0%	23,700	13,800
POW	越南天然氣股份總公司	公用服務	3.5%	20,700	59,876	7.1	1.5	7,912	20%	20,750	14,348
HDB	胡志明市發展商業股份銀行	金融	7.2%	27,350	159,034	85.0	1.6	23,754	24%	29,400	19,200
HPG	Hoa Phat (和發) 集團股份公司	原材料	4.9%	20,900	108,974	5.7	1.2	8,917	23%	21,150	14,783
MBB	軍隊貿易股份銀行	金融	3.5%	66,200	94,722	115.3	3.5	2,076	28%	106,000	56,000
MSN	Masan 集團股份公司	必需消費品	4.1%	42,250	61,786	88.9	2.7	9,125	45%	59,300	33,600
MWG	世界移動通信投資股份公司	非必需消費品	0.4%	34,850	44,280	13.5	1.8	832	17%	42,200	31,300
NVL	Nova 房地產投資集團股份公司	房地產	0.4%	11,400	26,697	16.8	0.9	4,822	4%	14,200	10,550
PNJ	Phu Nuan (富潤) 珠寶股份公司	非必需消費品	0.7%	60,800	77,980	19.0	3.1	613	62%	99,500	54,900
GVR	越南橡膠工業集團	原材料	2.9%	12,000	43,427	5.9	0.9	16,739	5%	13,600	8,212
PDR	Phat Dat 開發房地產股份公司	房地產	2.6%	23,400	58,399	17.1	2.0	1,255	0%	31,300	22,300
TPB	Tien Phong 股份商業銀行	金融	2.9%	33,700	50,521	25.1	2.2	22,533	#VALUE!	37,000	18,150
SAB	西貢啤酒 - 酒精 - 飲料股份公司	必需消費品	4.6%	29,450	55,520	7.7	1.3	16,680	23%	33,700	22,950
SSI	SSI 西貢證券股份公司	金融	6.5%	34,400	121,174	7.1	1.0	3,522	22%	36,150	25,850
STB	西貢商信銀行 (sacombank)	金融	2.0%	18,500	40,730	7.4	1.3	5,692	30%	20,100	15,411
TCB	越南技商股份銀行 (Techcombank)	金融	4.5%	89,500	500,224	14.9	3.1	1,175	23%	93,700	70,957
VCB	越南外商貿易股份銀行	金融	4.6%	42,700	185,931	4.5	1.0	6,703	22%	66,200	36,750
VHM	Vinhomes 股份公司	房地產	2.4%	21,050	53,400	6.1	1.5	3,409	21%	22,000	16,625
VIC	Vingroup 集團股份公司	房地產	4.1%	43,600	166,712	38.4	1.3	4,310	12%	76,600	38,700
VJC	Vietjet 越捷航空股份公司	工業	2.6%	105,700	57,248	#N/A N/A	3.8	913	18%	118,000	92,900
VNM	越南牛奶股份公司	必需消費品	4.7%	67,500	141,072	18.8	4.6	2,357	54%	81,900	65,500
VPB	Viet Nam Thịnh Vương (越南繁榮) 貿易股份銀行	金融	9.0%	19,600	155,505	12.8	1.3	11,254	28%	23,150	16,550
VRE	Vincom Retail 股份公司	房地產	1.7%	23,300	52,945	12.7	1.4	4,137	32%	32,000	21,600

## 元大證券（越南）公司

### 個人客戶分析部

**Nguyễn Th ệ Minh**  
研究分析經理  
+84 28 3622 6868 ext 3826  
minh.nguyen@yuanta.com.vn

**Lý Thị Hi ền**  
研究分析主管  
+84 28 3622 6868 ext 3908  
hien.ly@yuanta.com.vn

**Quách Đức Khánh**  
研究分析副主管  
+84 28 3622 6868 ext 3833  
khanh.quach@yuanta.com.vn

**Khổng Hữu Hiệp**  
高級分析專員  
+84 28 3622 6868 ext 3912  
hiep.khong@yuanta.com.vn

**Nguyễn Trịnh Ngọc Hồng**  
高級分析專員  
+84 28 3622 6868 ext 3832  
hong.nguyen@yuanta.com.vn

**Phạm Tấn Phát**  
高級分析專員  
+84 28 3622 6868 ext 3880  
phat.pham@yuanta.com.vn

### 個人客戶業務部

**Phạm Đắc Thành**  
北部分行經理  
+84 28 3622 6868 ext 3416  
thanh.pham@yuanta.com.vn

**Võ Thị Thu Thủy**  
平陽分行經理  
+84 28 3622 6868 ext 3505  
thuy.vo@yuanta.com.vn

**Lương Kỳ Ty**  
堤岸分行經理  
+84 28 3622 6868 ext 3653  
ty.luong@yuanta.com.vn

**Bùi Quốc Phong**  
同奈分行經理  
+84 28 3622 6868 ext 3701  
phong.bui@yuanta.com.vn

**Võ Đình Tuấn**  
峴港分行經理  
+84 28 3622 6868 ext 3301  
tuan.vo@yuanta.com.vn

**Nguyễn Việt Quang**  
河內分行經理  
+84 28 3622 6868 ext 3404  
quang.nguyen@yuanta.com.vn

**Đinh Thị Thu Cúc**  
頭頓分行經理  
+84 28 3622 6868 ext 3203  
cuc.dinh@yuanta.com.vn

## Appendix A: Important Disclosures

### Analyst Certification

Each research analyst primarily responsible for the content of this research report, in whole or in part, certifies that with respect to each security or issuer that the analyst covered in this report: (1) all of the views expressed accurately reflect his or her personal views about those securities or issuers; and (2) no part of his or her compensation was, is, or will be, directly or indirectly, related to the specific recommendations or views expressed by that research analyst in the research report.

### Ratings Definitions

**BUY:** We have a positive outlook on the stock based on our expected absolute or relative return over the investment period. Our thesis is based on our analysis of the company's outlook, financial performance, catalysts, valuation and risk profile. We recommend investors add to their position.

**HOLD-Outperform:** In our view, the stock's fundamentals are relatively more attractive than peers at the current price. Our thesis is based on our analysis of the company's outlook, financial performance, catalysts, valuation and risk profile.

**HOLD-Underperform:** In our view, the stock's fundamentals are relatively less attractive than peers at the current price. Our thesis is based on our analysis of the company's outlook, financial performance, catalysts, valuation and risk profile.

**SELL:** We have a negative outlook on the stock based on our expected absolute or relative return over the investment period. Our thesis is based on our analysis of the company's outlook, financial performance, catalysts, valuation and risk profile. We recommend investors reduce their position.

**Under Review:** We actively follow the company, although our estimates, rating and target price are under review.

**Restricted:** The rating and target price have been suspended temporarily to comply with applicable regulations and/or Yuanta policies.

Note: Yuanta research coverage with a Target Price is based on an investment period of 12 months. Greater China Discovery Series coverage does not have a formal 12 months Target Price and the recommendation is based on an investment period specified by the analyst in the report.

### Global Disclaimer

© 2020 Yuanta. All rights reserved. The information in this report has been compiled from sources we believe to be reliable, but we do not hold ourselves responsible for its completeness or accuracy. It is not an offer to sell or solicitation of an offer to buy any securities. All opinions and estimates included in this report constitute our judgment as of this date and are subject to change without notice.

This report provides general information only. Neither the information nor any opinion expressed herein constitutes an offer or invitation to make an offer to buy or sell securities or other investments. This material is prepared for general circulation to clients and is not intended to provide tailored investment advice and does not take into account the individual financial situation and objectives of any specific person who may receive this report. Investors should seek financial advice regarding the appropriateness of investing in any securities, investments or investment strategies discussed or recommended in this report. The information contained in this report has been compiled from sources believed to be reliable but no representation or warranty, express or implied, is made as to its accuracy, completeness or correctness. This report is not (and should not be construed as) a solicitation to act as securities broker or dealer in any jurisdiction by any person or company that is not legally permitted to carry on such business in that jurisdiction.

Yuanta research is distributed in the United States only to Major U.S. Institutional Investors (as defined in Rule 15a-6 under the Securities Exchange Act of 1934, as amended and SEC staff interpretations thereof). All transactions by a US person in the securities mentioned in this report must be effected through a registered broker-dealer under Section 15 of the Securities Exchange Act of 1934, as amended. Yuanta research is distributed in Taiwan by Yuanta Securities Investment Consulting. Yuanta research is distributed in Hong Kong by Yuanta Securities (Hong Kong) Co. Limited, which is licensed in Hong Kong by the Securities and Futures Commission for regulated activities, including Type 4 regulated activity (advising on securities). In Hong Kong, this research report may not be redistributed, retransmitted or disclosed, in whole or in part or any form or manner, without the express written consent of Yuanta Securities (Hong Kong) Co. Limited.