

## 預期上漲至 1305-1311 點

2024/09/16

合約走勢					
收盤	+/-	交易量	到期日	剩餘時間	
單位	點數	點數	合約	日期	日
VN30F2409	1294.1	-3.4	193,614	19/09	6
VN30F2410	1296.4	-6.5	1117	17/10	34
VN30F2412	1292.7	-1.8	459	19/12	97
VN30F2503	1292.7	-4.2	22	20/03	188

源自 Bloomberg - YSVN

合約更改交易量和持倉量				
交易量	+/-	OI	+/-	
單位	合約	%	%	
VN30F2409	193,614	19.9%	47,501	
VN30F2410	1,117	-21.6%	2,727	
VN30F2412	459	84.3%	941	
VN30F2503	22	-73.8%	119	

源自：Bloomberg - YSVN

合約的基差變動			
基差	前一盤	+/-	
單位	點數	點數	點數
VN30F2409	-0.2	-0.1	-0.1
VN30F2410	2.1	-0.1	2.2
VN30F2412	-1.6	-3.1	1.5
VN30F2503	-1.6	-0.7	-0.9

源自：Bloomberg - YSVN

### 合約走勢

- 股票市場處於平靜的趨勢，導致期貨合約再次調整並震盪。然而，4 個期貨合約均在低價區間被支撐。VN30F2409 合約收跌超過 3 點，基差為 -0.2 點。
- VN30F2409 的成交量比前一交易日增加 20%，合約的持股量增加至 47,501 份。

### VN30F1M 的評估

- VN30F2409 出現調整，但仍維持在 61.8% 斐波那契閾值以上，相當於 1292 點附近。1H 幀內的趨勢指標維持上行訊號，因此預計 9 月合約可能會逐步復甦，則退出下跌通道（突破 1296 點）。在這種情況下，價格可能會上漲至 1305-1311 點。
- 同時，VN30F2409 合約的短期走勢在日線圖維持下跌，追蹤停損相當於 1316 點。

### 投資策略

當天策略 (Intraday)	價格在突破 1296 點時，投資者考慮開設多頭，停損於 1292 點，止盈在 1305 點。空頭倉位在 1310-1311 點開設，停損於 1316 點或價格突破 1290 點。
主要短期 趨勢策略 (Daily)	投資者持有空頭倉位，停損於 1,316 點。

Pham Tan Phat

高級分析專員

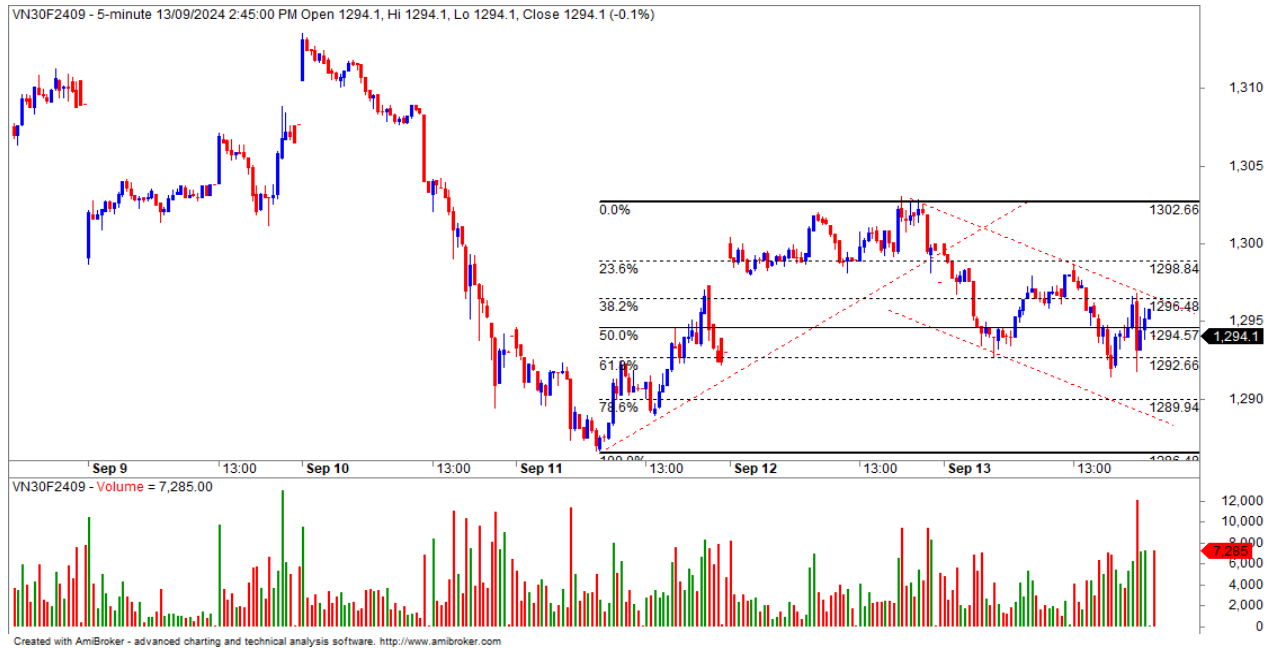
Email: [phat.pham@yuanta.com.vn](mailto:phat.pham@yuanta.com.vn)

Phone: (084) 28 3622 6868 ext 3880



We Create Fortune

### VN30F1M 合約走勢圖

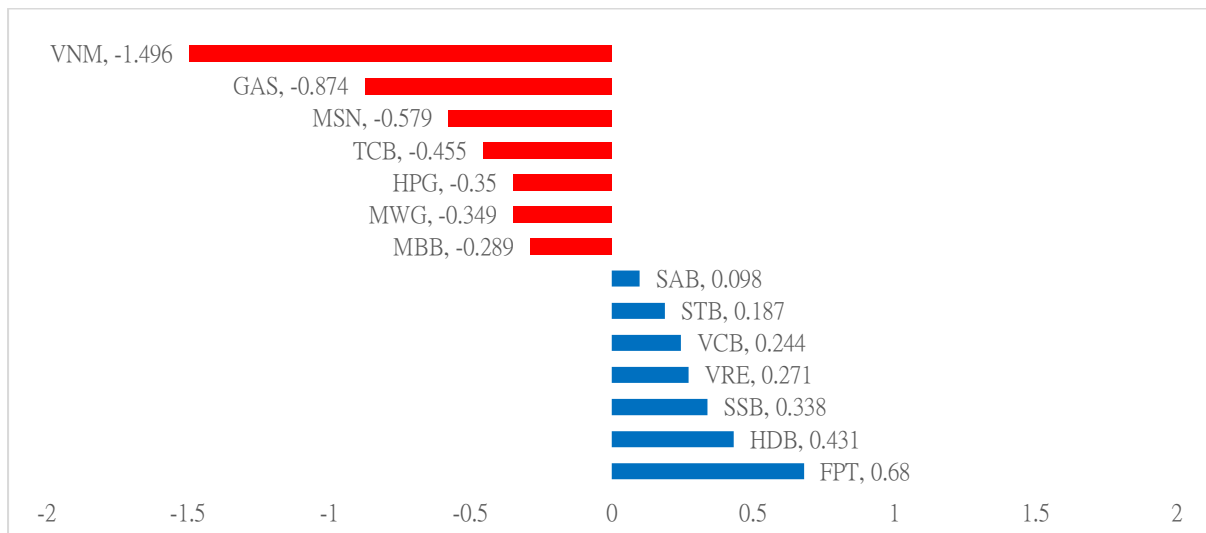


	VN30F2409-Daily	VN30F2409-1H
趨勢	下跌	上漲
支撐 1	1287	1290
支撐 2	1275	1283
阻力 1	1316	1305
阻力 2	1323	1311

### VN30-INDEX 指數走勢

VN30-Index 收盤下跌 0.26%，其中 VNM, GAS 和 MSN 是對指數負面貢獻最多的 3 檔股票。相反，FPT, HDB 和 SSB 是對指數積極貢獻最多的股票。

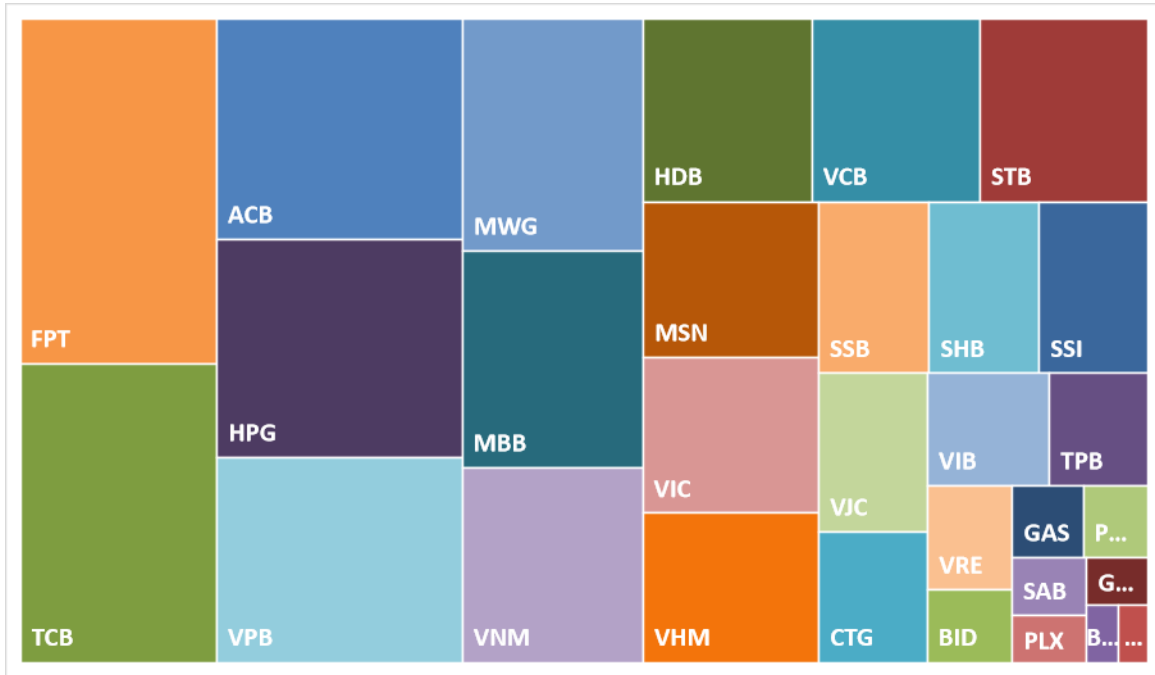
### VN30-INDEX 中最有影響力的成份股





We Create **Fortune**

### VN30-INDEX 中的資本化



### VNM 的走勢圖





We Create Fortune

VN30-INDEX 中的成分股

股碼	公司名稱	行業	比重	收盤價	資本化	PER	PBR	3個月平均交易量	外資持有	52週最高	52週最底
		單位	%	VND	Bil.VND	x	x	'000 cp	%	VND	VND
BID	越南投資與發展商業股份銀行	金融	7.5%	24,150	107,870	6.6	1.4	7,480	30%	26,261	18,217
KDH	Khang Dien 房屋貿易投資股份公司	房地產	0.2%	71,400	73,899	29.6	3.9	899	2%	74,500	50,400
CTG	越南工商股份銀行	金融	0.8%	48,300	275,331	12.1	2.1	2,438	17%	56,700	34,608
ACB	亞洲商業股份銀行	金融	0.2%	43,100	31,994	17.1	1.4	731	26%	48,300	38,200
PLX	越南油氣集團	能源	2.2%	34,950	187,681	9.3	1.4	7,694	27%	37,150	24,431
BVH	Bao Viet 集團	金融	9.8%	130,600	190,735	26.7	6.9	5,796	46%	139,700	71,826
FPT	FPT 發展投資工藝股份公司	科技	0.7%	83,600	192,007	17.0	2.8	1,348	2%	93,250	73,000
GAS	越南氣體總公司 - 股份公司	公用服務	0.4%	34,100	136,400	48.5	2.7	3,725	1%	39,000	16,450
POW	越南天然氣股份總公司	公用服務	4.4%	26,350	76,746	6.3	1.5	7,579	19%	27,700	16,550
HDB	胡志明市發展商業股份銀行	金融	6.9%	25,350	162,145	14.5	1.5	20,277	23%	29,950	20,545
HPG	Hoa Phat (和發) 集團股份公司	原材料	5.3%	23,900	126,821	5.9	1.3	16,627	23%	25,750	16,950
MBB	軍隊貿易股份銀行	金融	3.7%	75,100	108,020	158.4	3.2	5,110	30%	82,400	56,000
MSN	Masan 集團股份公司	必需消費品	6.1%	67,800	99,118	45.0	3.8	8,235	47%	70,800	33,600
MWG	世界移動通信投資股份公司	非必需消費品	0.4%	45,800	58,193	15.9	2.3	2,148	18%	51,700	31,300
NVL	Nova 房地產投資集團股份公司	房地產	0.6%	12,850	30,093	28.7	1.0	11,905	4%	15,900	10,400
PNJ	Phu Nuan (富潤) 珠寶股份公司	非必需消費品	0.6%	55,400	71,054	16.9	3.0	982	61%	88,000	52,000
GVR	越南橡膠工業集團	原材料	2.5%	10,300	37,723	4.7	0.7	16,773	3%	12,800	9,990
PDR	Phat Dat 開發房地產股份公司	房地產	2.1%	16,000	45,360	9.8	1.4	3,146	0%	24,253	16,000
TPB	Tien Phong 股份商業銀行	金融	2.6%	32,500	49,047	17.2	2.0	12,069	#VALUE!	39,250	25,650
SAB	西貢啤酒 - 酒精 - 飲料股份公司	必需消費品	4.3%	29,600	55,802	6.8	1.1	9,755	23%	33,700	25,850
SSI	SSI 西貢證券股份公司	金融	7.8%	22,100	155,695	7.2	1.1	14,684	21%	25,250	13,600
STB	西貢商信銀行 (sacombank)	金融	1.5%	17,850	39,299	8.3	1.1	9,645	29%	20,250	15,600
TCB	越南技商股份銀行 (Techcombank)	金融	4.2%	88,400	494,076	14.8	2.7	1,662	23%	100,500	80,100
VCB	越南外商貿易股份銀行	金融	4.3%	43,000	187,238	8.0	1.0	9,067	14%	54,900	34,000
VHM	Vinhomes 股份公司	房地產	1.8%	17,850	53,177	6.9	1.4	4,332	4%	21,368	14,786
VIC	Vingroup 集團股份公司	房地產	3.8%	43,000	164,417	43.5	1.2	2,576	11%	61,400	38,700
VJC	Vietjet 越捷航空股份公司	工業	2.4%	105,000	56,869	61.4	3.4	798	13%	119,600	94,000
VNM	越南牛奶股份公司	必需消費品	4.8%	74,600	155,911	18.0	4.5	4,750	52%	81,200	63,000
VPB	Viet Nam Thinh Vuong (越南繁榮) 貿易股份銀行	金融	6.7%	18,250	144,794	12.1	1.1	22,746	26%	23,150	17,500
VRE	Vincom Retail 股份公司	房地產	1.3%	19,100	43,401	9.7	1.1	11,210	22%	29,900	16,700



We Create **Fortune**

## 元大證券（越南）公司

### 個人客戶分析部

**Nguyễn Th ê Minh**

研究分析經理

+84 28 3622 6868 ext 3826

minh.nguyen@yuantan.com.vn

**Lý Thị Hi ền**

研究分析主管

+84 28 3622 6868 ext 3908

hien.ly@yuantan.com.vn

**Quách Đức Khánh**

高級分析專員

+84 28 3622 6868 ext 3833

khanh.quach@yuantan.com.vn

**Khổng Hữu Hiệp**

高級分析專員

+84 28 3622 6868 ext 3912

hiep.khong@yuantan.com.vn

**Nguyễn Trịnh Ngọc Hồng**

高級分析專員

+84 28 3622 6868 ext 3832

hong.nguyen@yuantan.com.vn

**Phạm Tấn Phát**

高級分析專員

+84 28 3622 6868 ext 3880

phat.pham@yuantan.com.vn

### 個人客戶業務部

**Nguyễn Thanh Tùng**

總公司業務經理

+84 28 3622 6868 ext 3609

tung.nguyen@yuantan.com.vn

**Phạm Đắc Thành**

北部區域經理

+84 28 3622 6868 ext 3416

thanh.pham@yuantan.com.vn

**Nguyễn Mạnh Hoat**

南部區域經理（胡志明市）

+84 28 3622 6868 ext 3847

hoat.nguyen@yuantan.com.vn

**Lương Kỳ Ty**

堤岸分行經理

+84 28 3622 6868 ext 3653

ty.luong@yuantan.com.vn

**Bùi Quốc Phong**

同奈分行經理

+84 28 3622 6868 ext 3701

phong.bui@yuantan.com.vn

**Võ Thị Thu Thủy**

平陽分行經理

+84 28 3622 6868 ext 3505

thuy.vo@yuantan.com.vn

**Nguyễn Việt Quang**

河內分行經理

+84 28 3622 6868 ext 3404

quang.nguyen@yuantan.com.vn

**Võ Đình Tuấn**

峴港分行經理

+84 28 3622 6868 ext 3301

tuan.vo@yuantan.com.vn

**Đinh Thị Thu Cúc**

頭頓分行經理

+84 28 3622 6868 ext 3203

cuc.dinh@yuantan.com.vn



We Create Fortune

## Appendix A: Important Disclosures

### Analyst Certification

Each research analyst primarily responsible for the content of this research report, in whole or in part, certifies that with respect to each security or issuer that the analyst covered in this report: (1) all of the views expressed accurately reflect his or her personal views about those securities or issuers; and (2) no part of his or her compensation was, is, or will be, directly or indirectly, related to the specific recommendations or views expressed by that research analyst in the research report.

### Ratings Definitions

**BUY:** We have a positive outlook on the stock based on our expected absolute or relative return over the investment period. Our thesis is based on our analysis of the company's outlook, financial performance, catalysts, valuation and risk profile. We recommend investors add to their position.

**HOLD-Outperform:** In our view, the stock's fundamentals are relatively more attractive than peers at the current price. Our thesis is based on our analysis of the company's outlook, financial performance, catalysts, valuation and risk profile.

**HOLD-Underperform:** In our view, the stock's fundamentals are relatively less attractive than peers at the current price. Our thesis is based on our analysis of the company's outlook, financial performance, catalysts, valuation and risk profile.

**SELL:** We have a negative outlook on the stock based on our expected absolute or relative return over the investment period. Our thesis is based on our analysis of the company's outlook, financial performance, catalysts, valuation and risk profile. We recommend investors reduce their position.

**Under Review:** We actively follow the company, although our estimates, rating and target price are under review.

**Restricted:** The rating and target price have been suspended temporarily to comply with applicable regulations and/or Yuanta policies.

Note: Yuanta research coverage with a Target Price is based on an investment period of 12 months. Greater China Discovery Series coverage does not have a formal 12 months Target Price and the recommendation is based on an investment period specified by the analyst in the report.

### Global Disclaimer

© 2020 Yuanta. All rights reserved. The information in this report has been compiled from sources we believe to be reliable, but we do not hold ourselves responsible for its completeness or accuracy. It is not an offer to sell or solicitation of an offer to buy any securities. All opinions and estimates included in this report constitute our judgment as of this date and are subject to change without notice.

This report provides general information only. Neither the information nor any opinion expressed herein constitutes an offer or invitation to make an offer to buy or sell securities or other investments. This material is prepared for general circulation to clients and is not intended to provide tailored investment advice and does not take into account the individual financial situation and objectives of any specific person who may receive this report. Investors should seek financial advice regarding the appropriateness of investing in any securities, investments or investment strategies discussed or recommended in this report. The information contained in this report has been compiled from sources believed to be reliable but no representation or warranty, express or implied, is made as to its accuracy, completeness or correctness. This report is not (and should not be construed as) a solicitation to act as securities broker or dealer in any jurisdiction by any person or company that is not legally permitted to carry on such business in that jurisdiction.

Yuanta research is distributed in the United States only to Major U.S. Institutional Investors (as defined in Rule 15a-6 under the Securities Exchange Act of 1934, as amended and SEC staff interpretations thereof). All transactions by a US person in the securities mentioned in this report must be effected through a registered broker-dealer under Section 15 of the Securities Exchange Act of 1934, as amended. Yuanta research is distributed in Taiwan by Yuanta Securities Investment Consulting. Yuanta research is distributed in Hong Kong by Yuanta Securities (Hong Kong) Co. Limited, which is licensed in Hong Kong by the Securities and Futures Commission for regulated activities, including Type 4 regulated activity (advising on securities). In Hong Kong, this research report may not be redistributed, retransmitted or disclosed, in whole or in part or any form or manner, without the express written consent of Yuanta Securities (Hong Kong) Co. Limited.